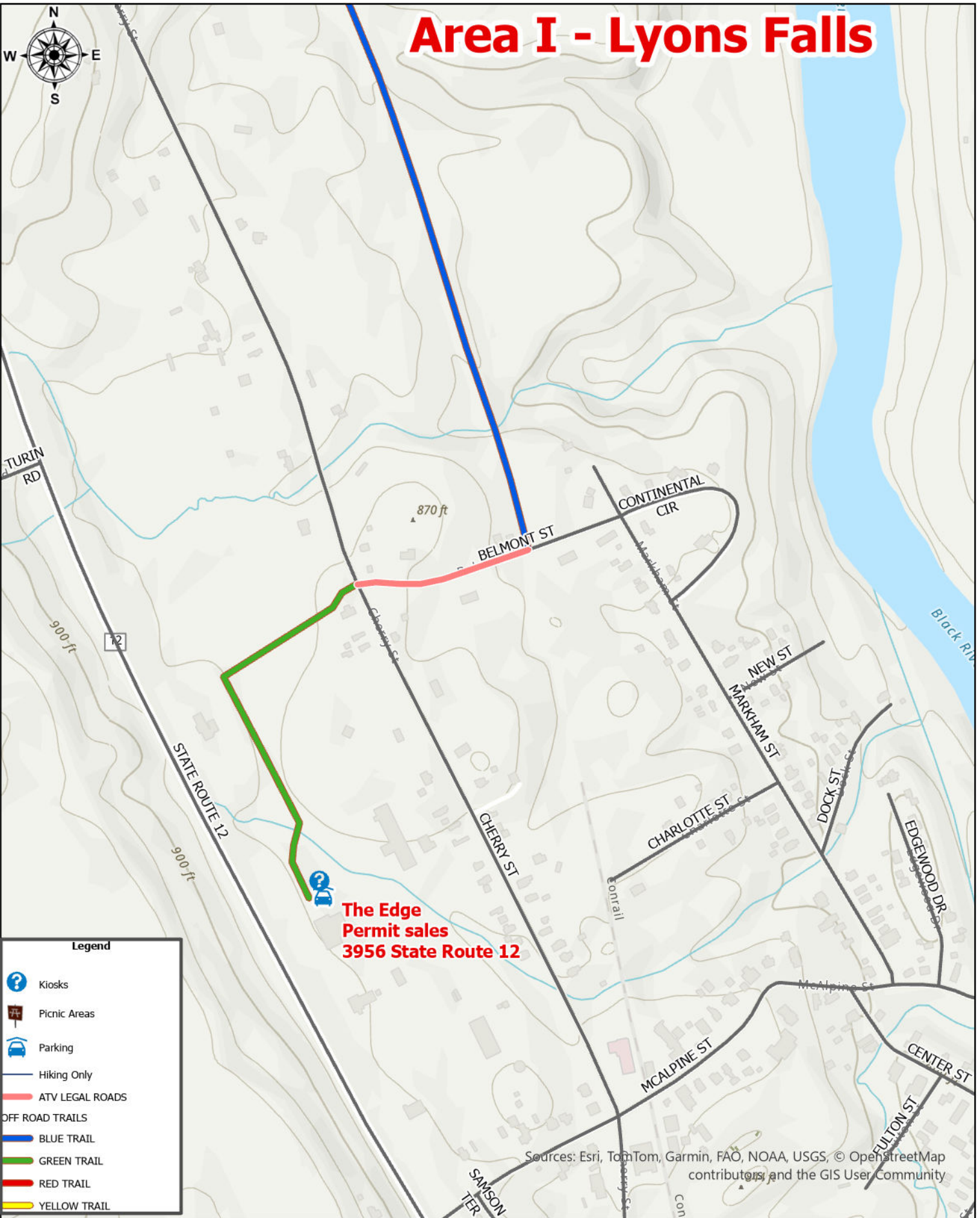








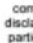


# Area I - Lyons Falls



**Legend**

-  Kiosks
-  Picnic Areas
-  Parking
-  Hiking Only
-  ATV LEGAL ROADS
- OFF ROAD TRAILS**
-  BLUE TRAIL
-  GREEN TRAIL
-  RED TRAIL
-  YELLOW TRAIL

**The Edge  
Permit sales  
3956 State Route 12**

Sources: Esri, TomTom, Garmin, FAO, NOAA, USGS, © OpenStreetMap contributors, and the GIS User Community

**Important Disclaimer Notice**

The County of Lewis makes no warranty, representation, or guarantee as to the content, sequence, accuracy, timeliness, or completeness of any information provided herein or derived from the mapping data for any reason. The County of Lewis explicitly disclaims any representations and warranties, including, without limitation, the implied warranties of merchantability and fitness for a particular purpose. This information and data is subject to what an accurate survey would disclose. The user knowingly waives any and all claims for damages against any and all of the entities comprising the County of Lewis that may arise from the mapping data.

