

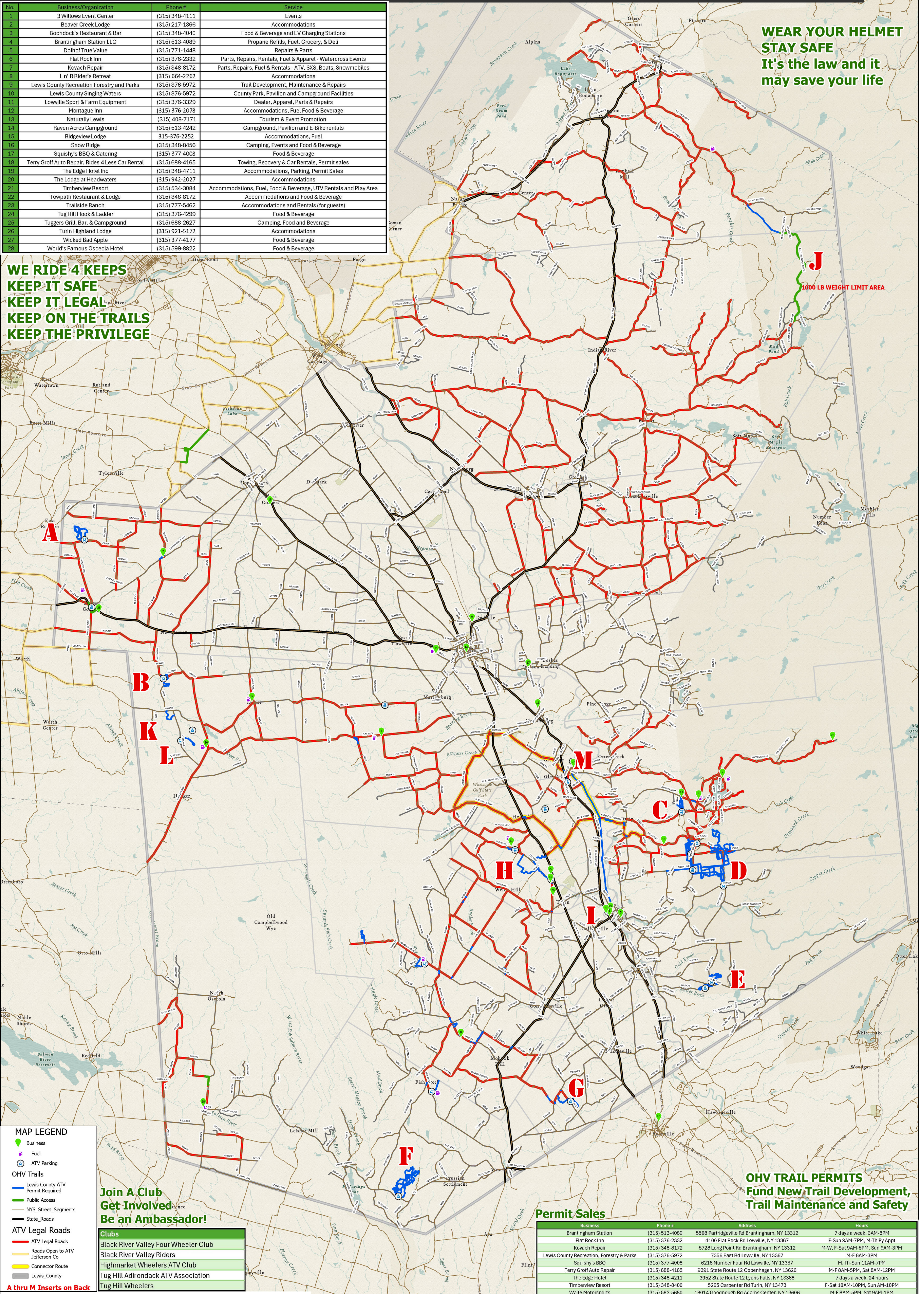
2026 Official Lewis County OHV Trail Map



No.	Business/Organization	Phone #	Service
1	3 Willows Event Center	(315) 348-4111	Events
2	Beaver Creek Lodge	(315) 217-1366	Accommodations
3	Boondock's Restaurant & Bar	(315) 348-4040	Food & Beverage and EV Charging Stations
4	Brantingham Station LLC	(315) 513-4089	Propane Refills, Fuel, Grocery, & Deli
5	Dolhof True Value	(315) 771-1448	Repairs & Parts
6	Flat Rock Inn	(315) 376-2332	Parts, Repairs, Rentals, Fuel & Apparel - Watercross Events
7	Kovach Repair	(315) 348-8172	Parts, Repairs, Fuel & Rentals - ATV, SXS, Boats, Snowmobiles
8	L n' R Rider's Retreat	(315) 664-2262	Accommodations
9	Lewis County Recreation Forestry and Parks	(315) 376-5972	Trail Development, Maintenance & Repairs
10	Lewis County Singing Waters	(315) 376-5972	County Park, Pavilion and Campground Facilities
11	Lowville Sport & Farm Equipment	(315) 376-3329	Dealer, Apparel, Parts & Repairs
12	Montague Inn	(315) 376-2078	Accommodations, Fuel Food & Beverage
13	Naturally Lewis	(315) 408-7171	Tourism & Event Promotion
14	Raven Acres Campground	(315) 513-4242	Campground, Pavilion and E-Bike rentals
15	Ridgeview Lodge	315-376-2252	Accommodations, Fuel
16	Snow Ridge	(315) 348-8456	Camping, Events and Food & Beverage
17	Squishy's BBQ & Catering	(315) 377-4008	Food & Beverage
18	Terry Groff Auto Repair, Rides 4 Less Car Rental	(315) 688-4165	Towing, Recovery & Car Rentals, Permit sales
19	The Edge Hotel Inc	(315) 348-4711	Accommodations, Parking, Permit Sales
20	The Lodge at Headwaters	(315) 942-2027	Accommodations
21	Timberview Resort	(315) 534-3084	Accommodations, Fuel, Food & Beverage, UTV Rentals and Play Area
22	Towpath Restaurant & Lodge	(315) 348-8172	Accommodations and Food & Beverage
23	Trailside Ranch	(315) 777-5462	Accommodations and Rentals (for guests)
24	Tug Hill Hook & Ladder	(315) 376-4299	Food & Beverage
25	Tuggers Grill, Bar, & Campground	(315) 688-2627	Camping, Food and Beverage
26	Turin Highland Lodge	(315) 921-5172	Accommodations
27	Wicked Bad Apple	(315) 377-4177	Food & Beverage
28	World's Famous Osceola Hotel	(315) 599-8822	Food & Beverage

**WEAR YOUR HELMET
STAY SAFE
It's the law and it
may save your life**

**WE RIDE 4 KEEPS
KEEP IT SAFE
KEEP IT LEGAL
KEEP ON THE TRAILS
KEEP THE PRIVILEGE**



J
1000 LB WEIGHT LIMIT AREA

MAP LEGEND

- Business (Green dot)
- Fuel (Blue circle)
- ATV Parking (Blue square)

OHV Trails

- Lewis County ATV Permit Required (Red line)
- Public Access (Green line)
- NYS Street Segments (Yellow line)
- State Roads (Black line)

ATV Legal Roads

- ATV Legal Roads (Red line)
- Roads Open to ATV Jefferson Co (Yellow line)
- Connector Route (Blue line)
- Lewis County (Grey line)

A thru M Inserts on Back

**Join A Club
Get Involved
Be an Ambassador!**

Clubs

- Black River Valley Four Wheeler Club
- Black River Valley Riders
- Highmarket Wheelers ATV Club
- Tug Hill Adirondack ATV Association
- Tug Hill Wheelers

**OHV TRAIL PERMITS
Fund New Trail Development,
Trail Maintenance and Safety**

Permit Sales

Business	Phone #	Address	Hours
Brantingham Station	(315) 513-4089	5508 Partridgeville Rd Brantingham, NY 13312	7 days a week, 6AM-8PM
Flat Rock Inn	(315) 376-2332	4100 Flat Rock Rd Lowville, NY 13367	F-Sun 9AM-7PM, M-Th By Appt
Kovach Repair	(315) 348-8172	5728 Long Point Rd Brantingham, NY 13312	M-W, F-Sat 9AM-5PM, Sun 9AM-3PM
Lewis County Recreation, Forestry & Parks	(315) 376-5972	7356 East Rd Lowville, NY 13367	M-F 8AM-3PM
Squishy's BBQ	(315) 377-4008	6218 Number Four Rd Lowville, NY 13367	M, Th-Sun 11AM-7PM
Terry Groff Auto Repair	(315) 688-4165	9391 State Route 12 Copenhagen, NY 13626	M-F 8AM-5PM, Sat 8AM-12PM
The Edge Hotel	(315) 348-4211	3952 State Route 12 Lyons Falls, NY 13368	7 days a week, 24 hours
Timberview Resort	(315) 348-8400	5265 Carpenter Rd Turin, NY 13473	F-Sat 10AM-10PM, Sun AM-10PM
Waite Motorsports	(315) 583-5680	18014 Goodnough Rd Adams Center, NY 13606	M-F 8AM-5PM, Sat 9AM-1PM
World Famous Osceola Hotel	(315) 599-8822	1316 Mary St Osceola, NY 13316	Sun, M-Th 12PM-11PM, F-Sat 11AM-2AM

Important Disclaimer Notice
The County of Lewis makes no warranty, representation, or guarantee as to the content, sequence, accuracy, timeliness, or completeness of any information provided herein or derived from the mapping data for any reason. The County of Lewis explicitly disclaims any representations and warranties, including, without limitation, the implied warranties of merchantability and fitness for a particular purpose. This information and data is subject to what an accurate survey would disclose. The user knowingly waives any and all claims for damages against any and all of the entities comprising the County of Lewis that may arise from the mapping data.



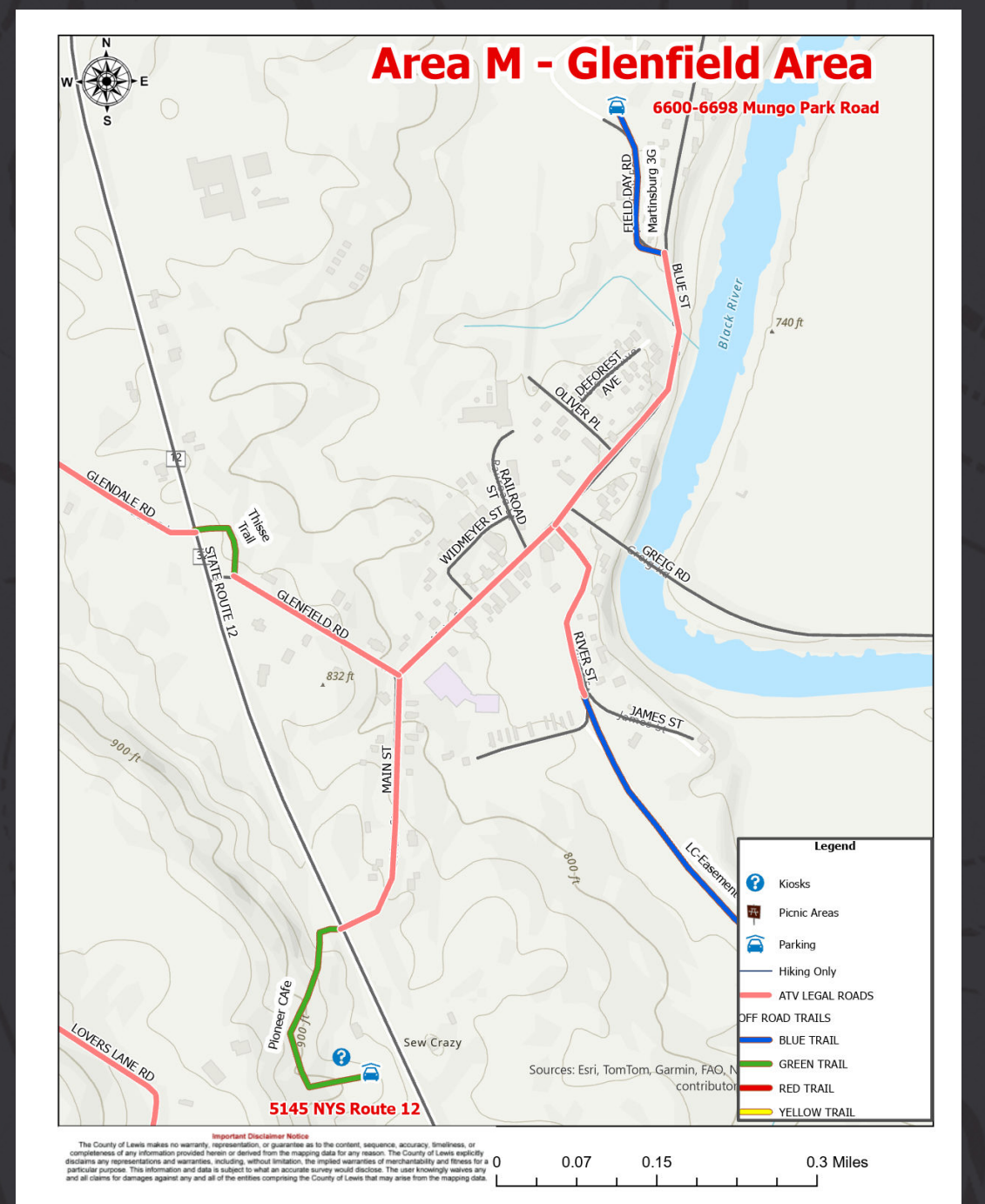
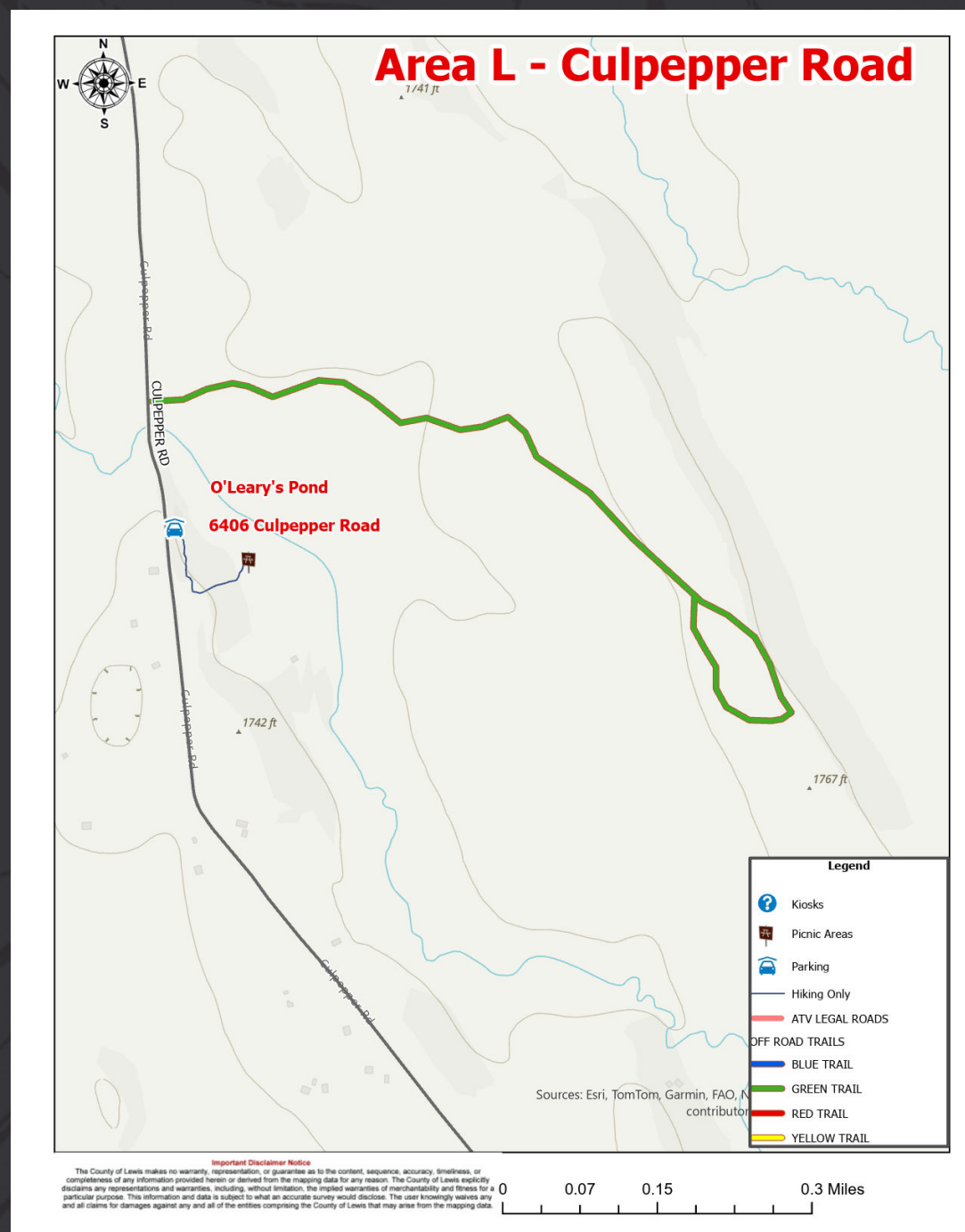
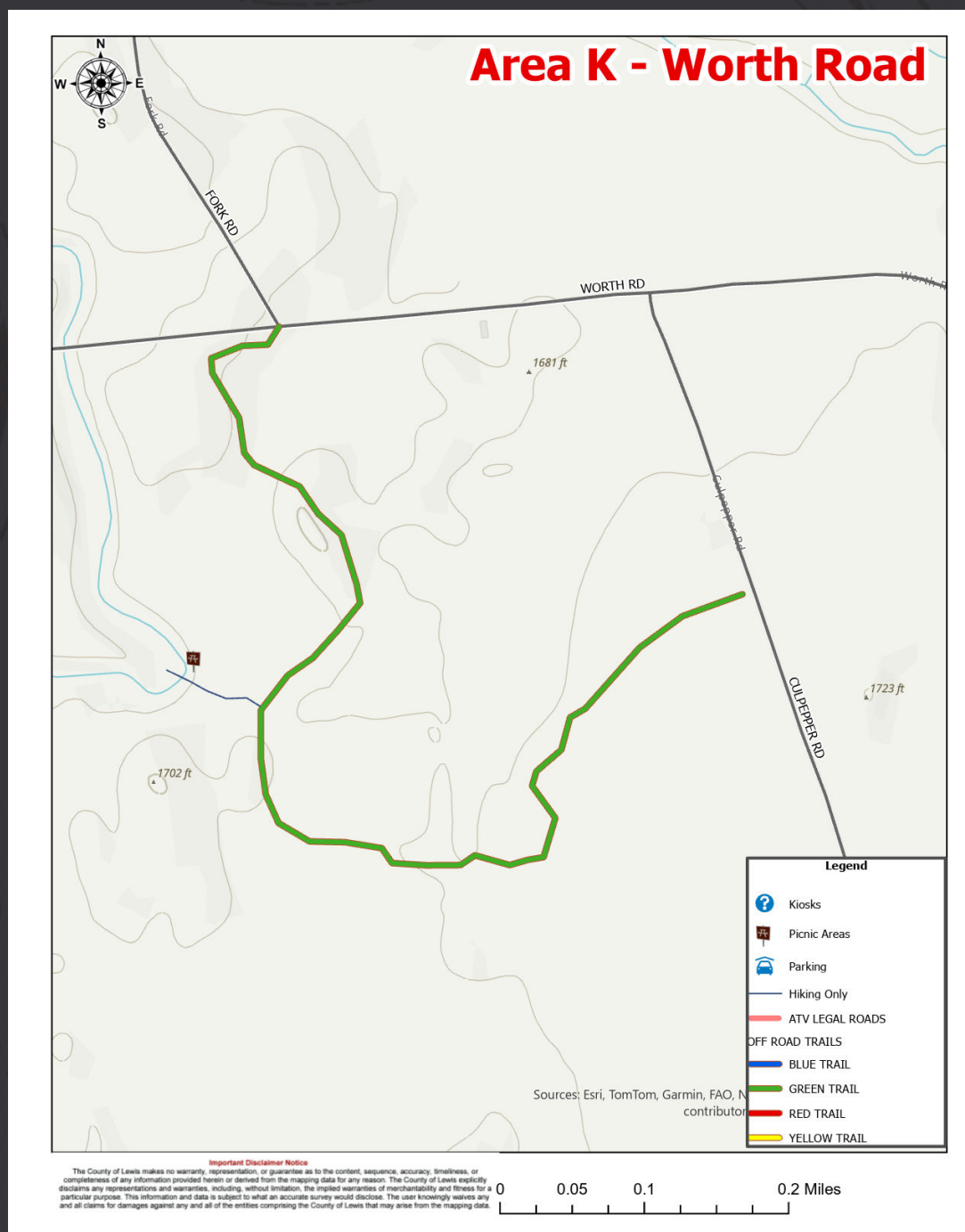
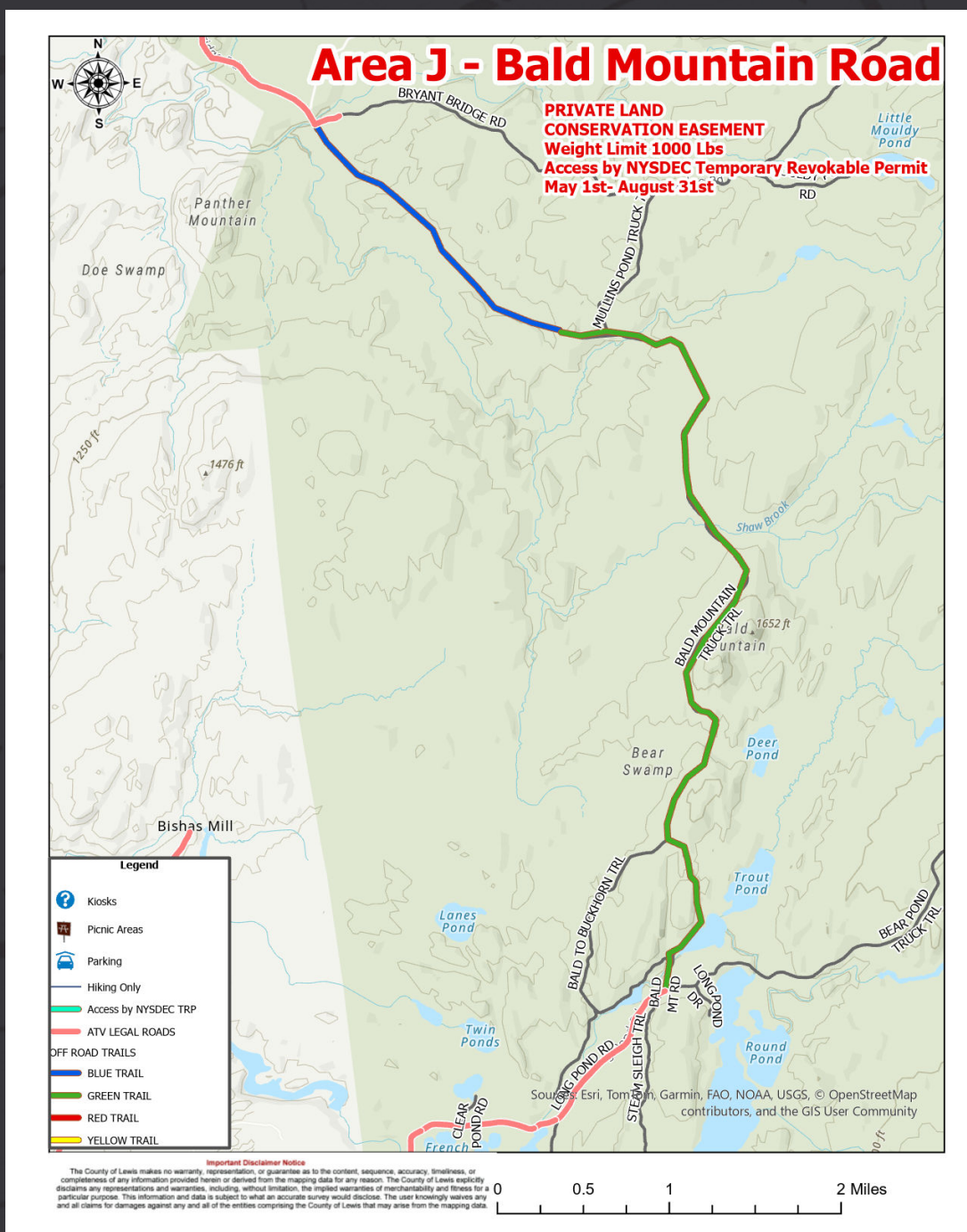
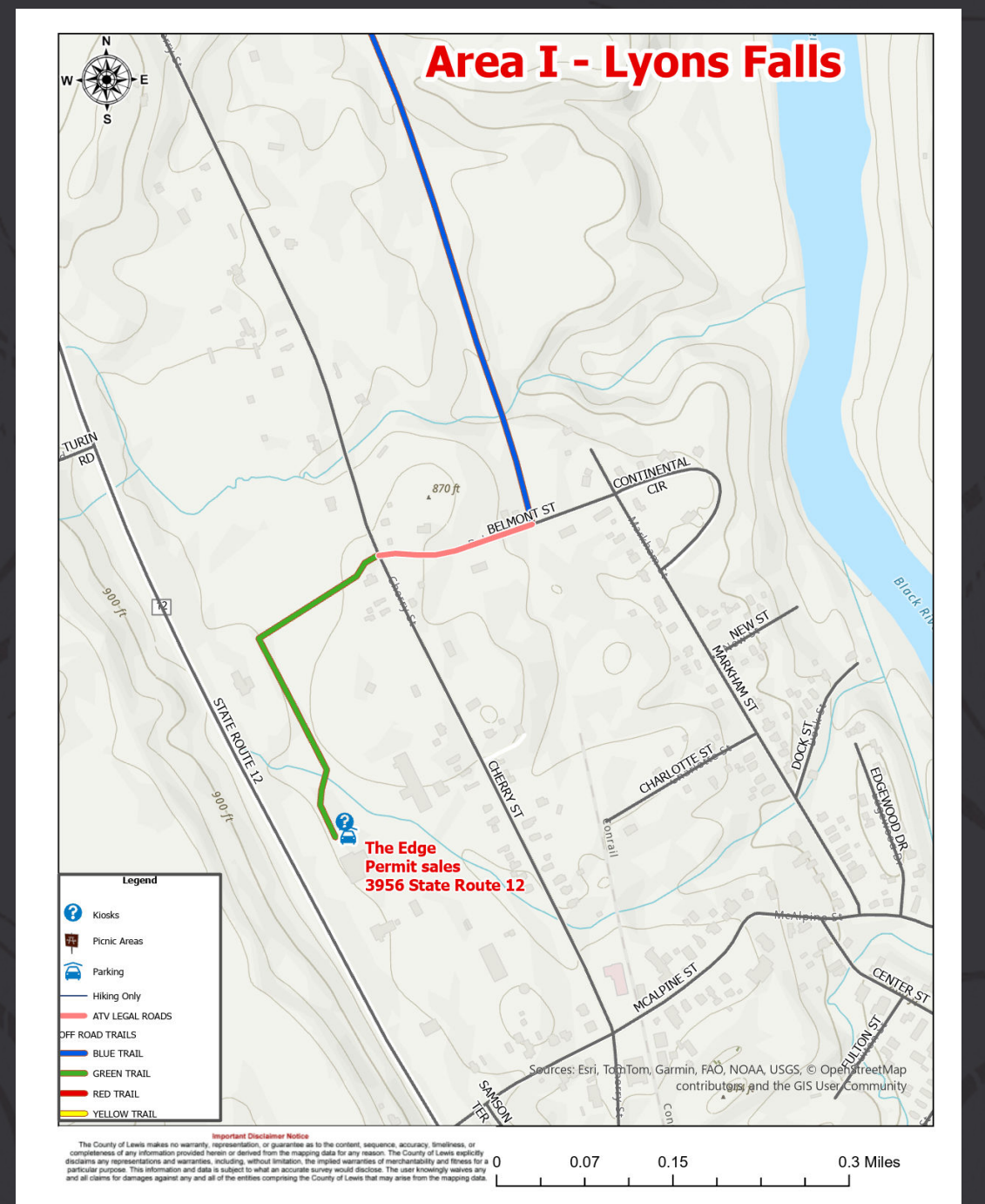
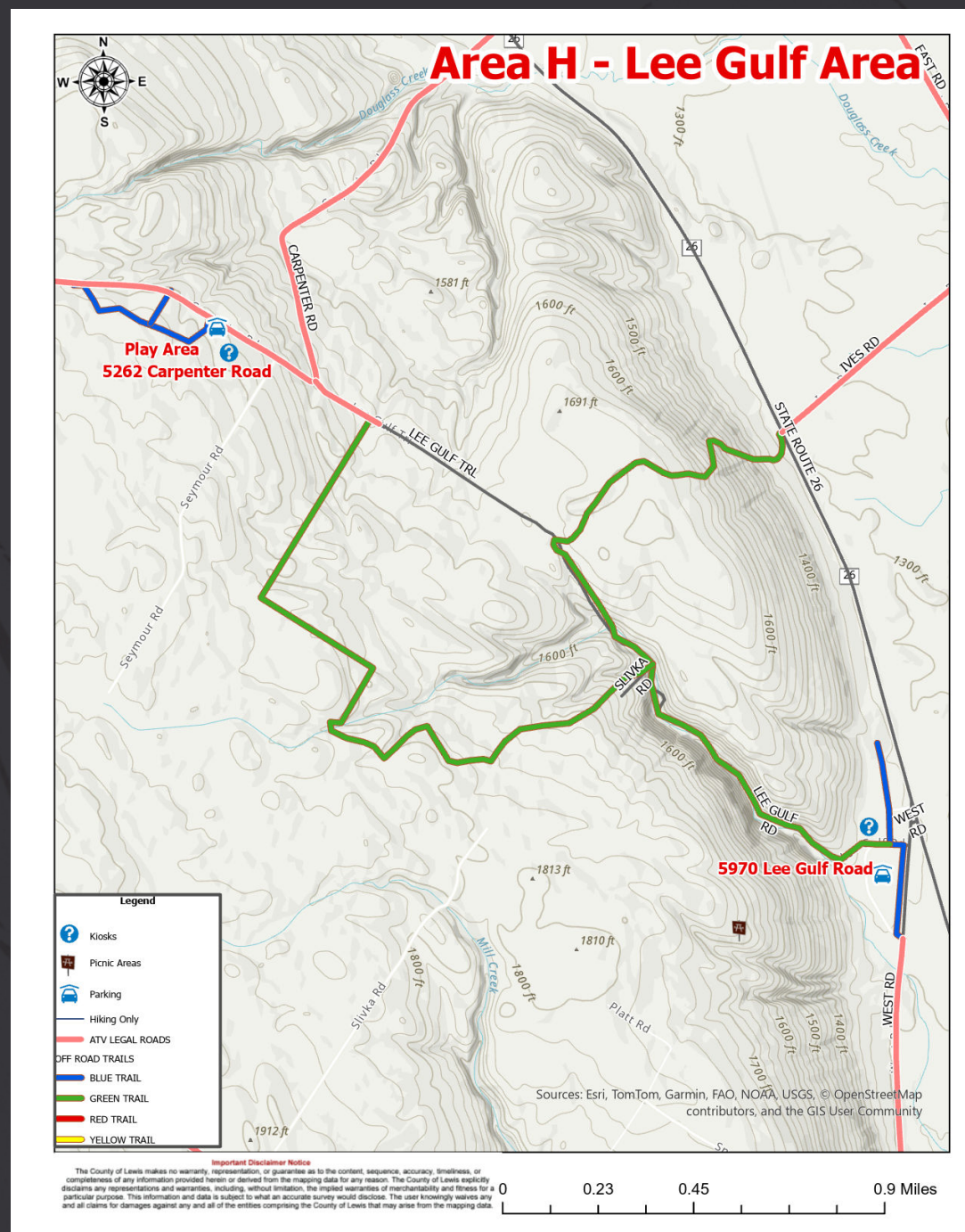
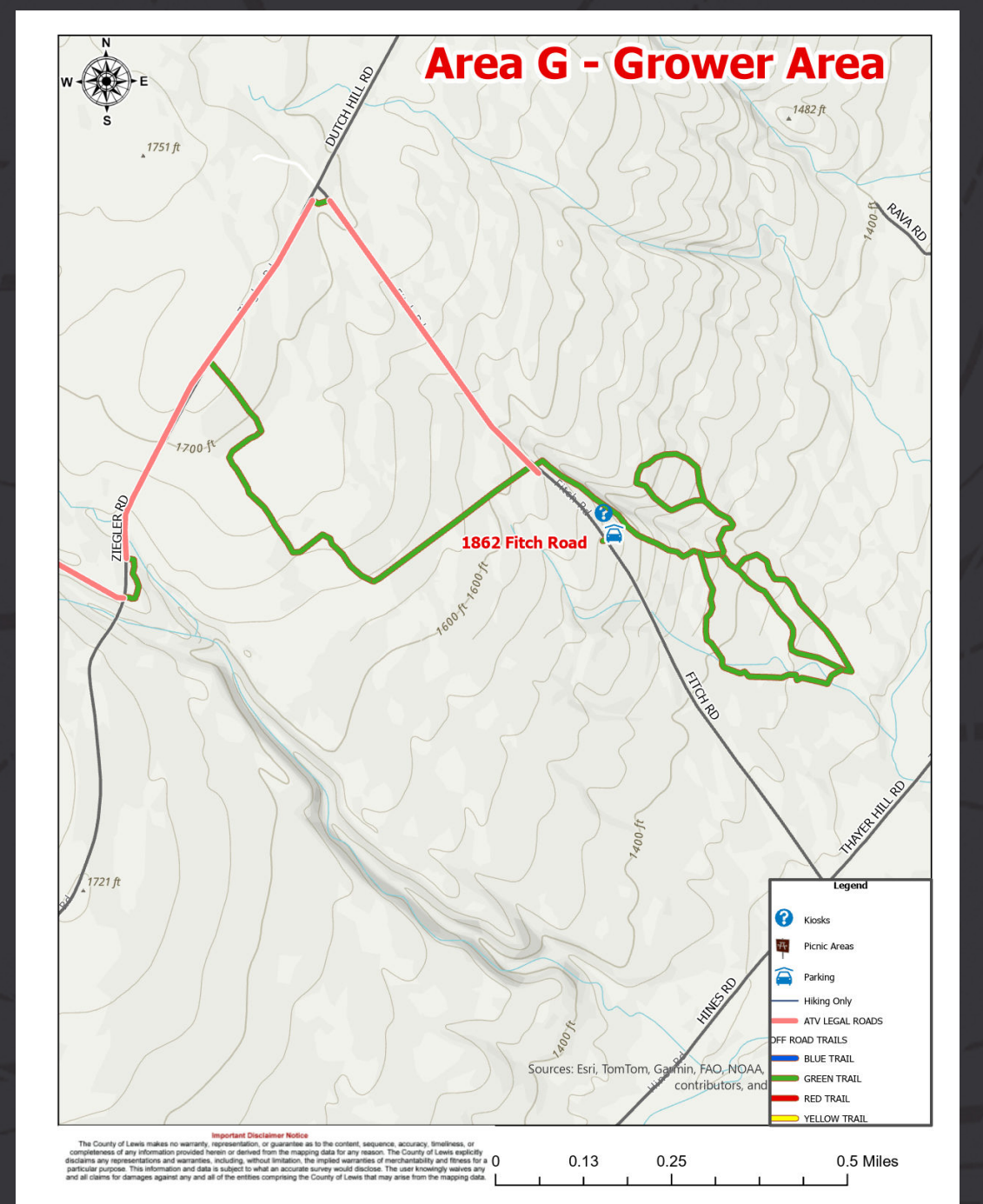
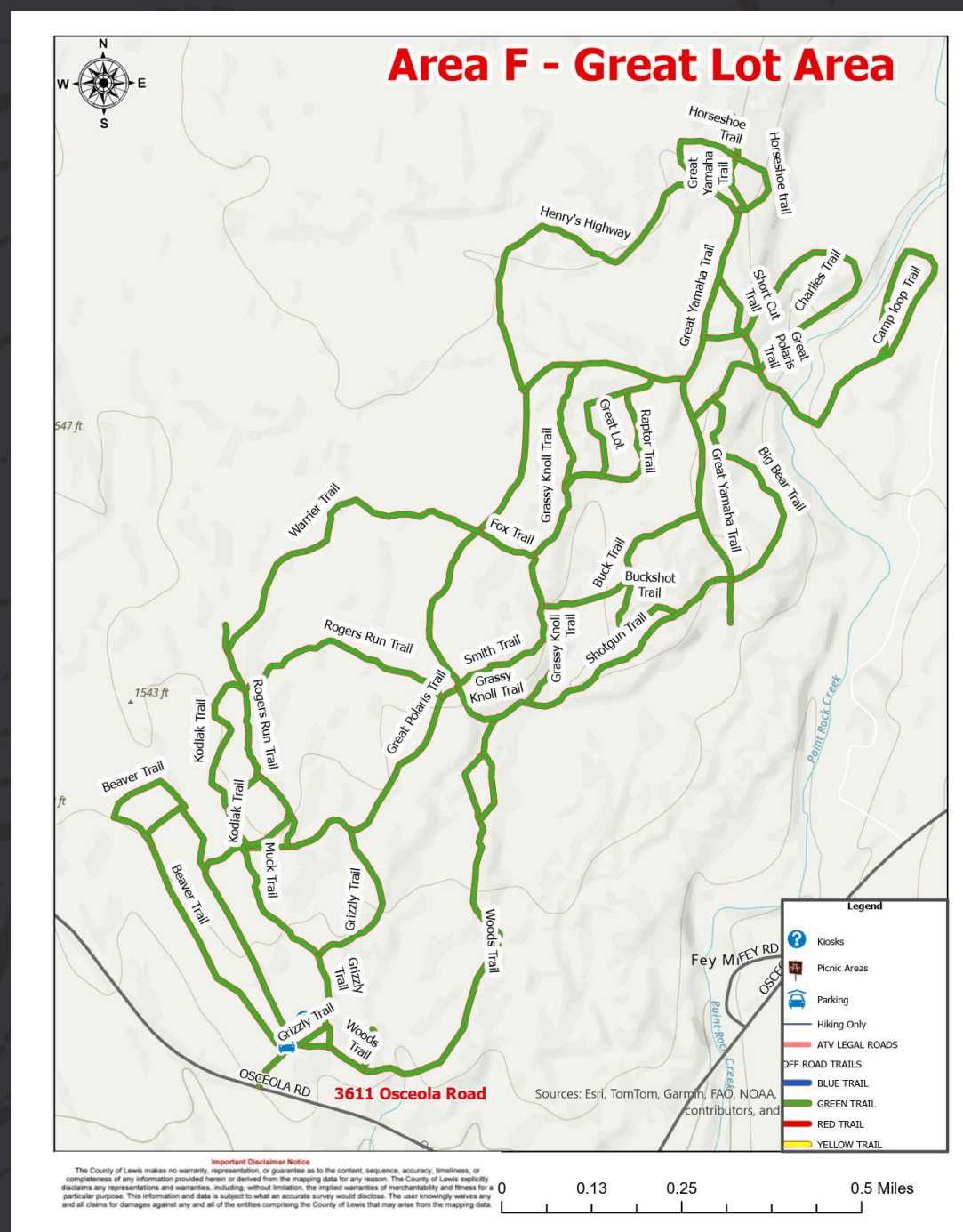
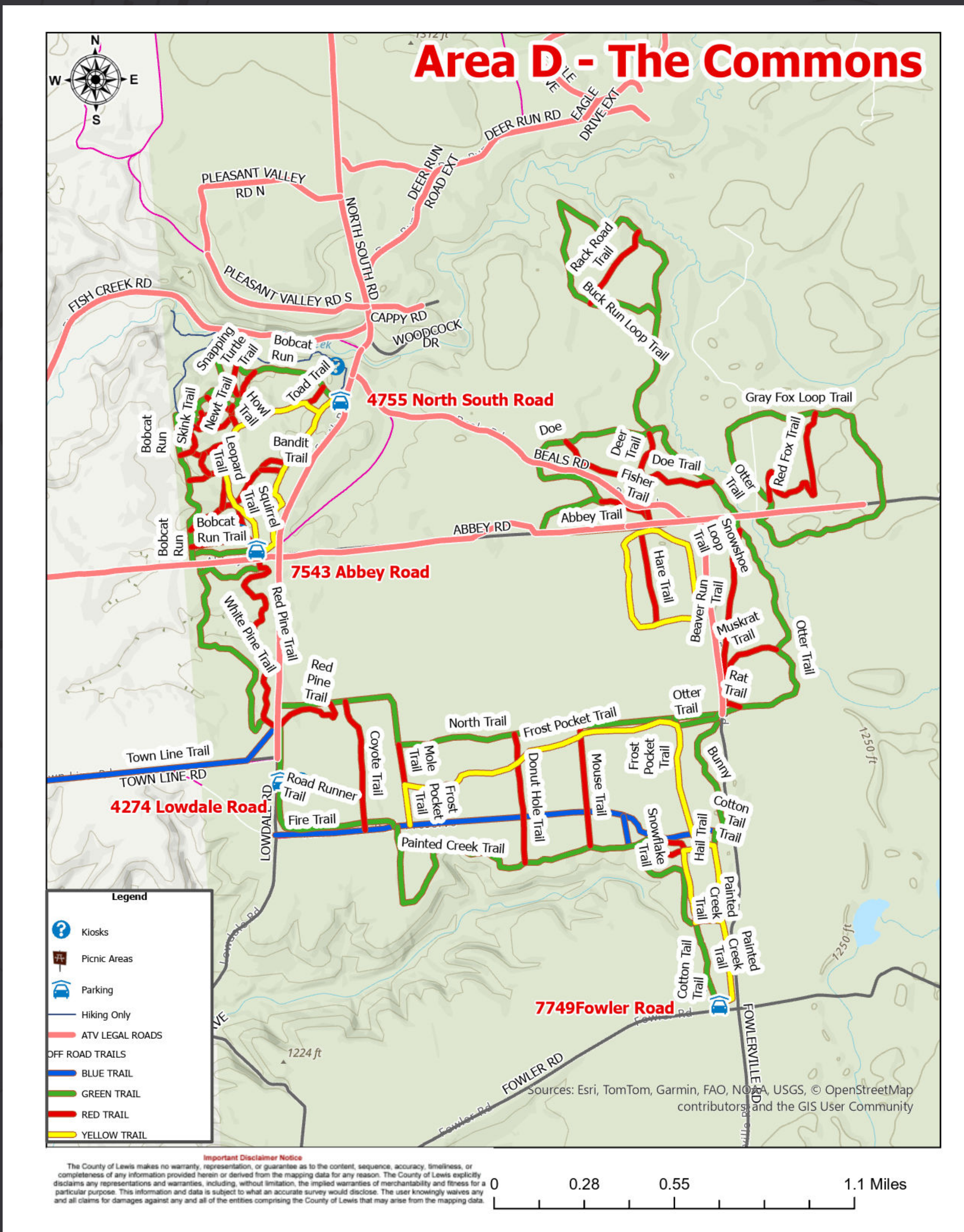
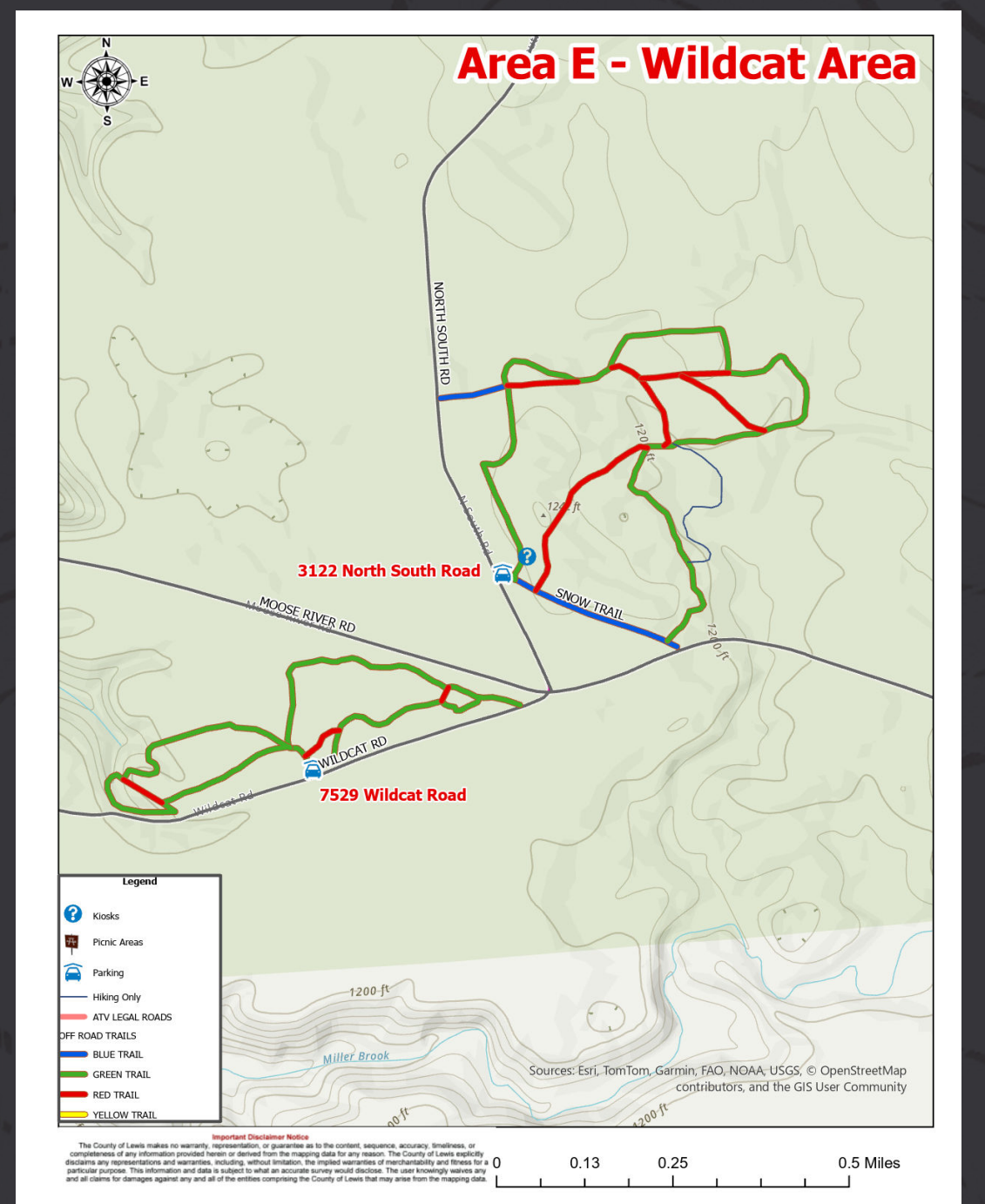
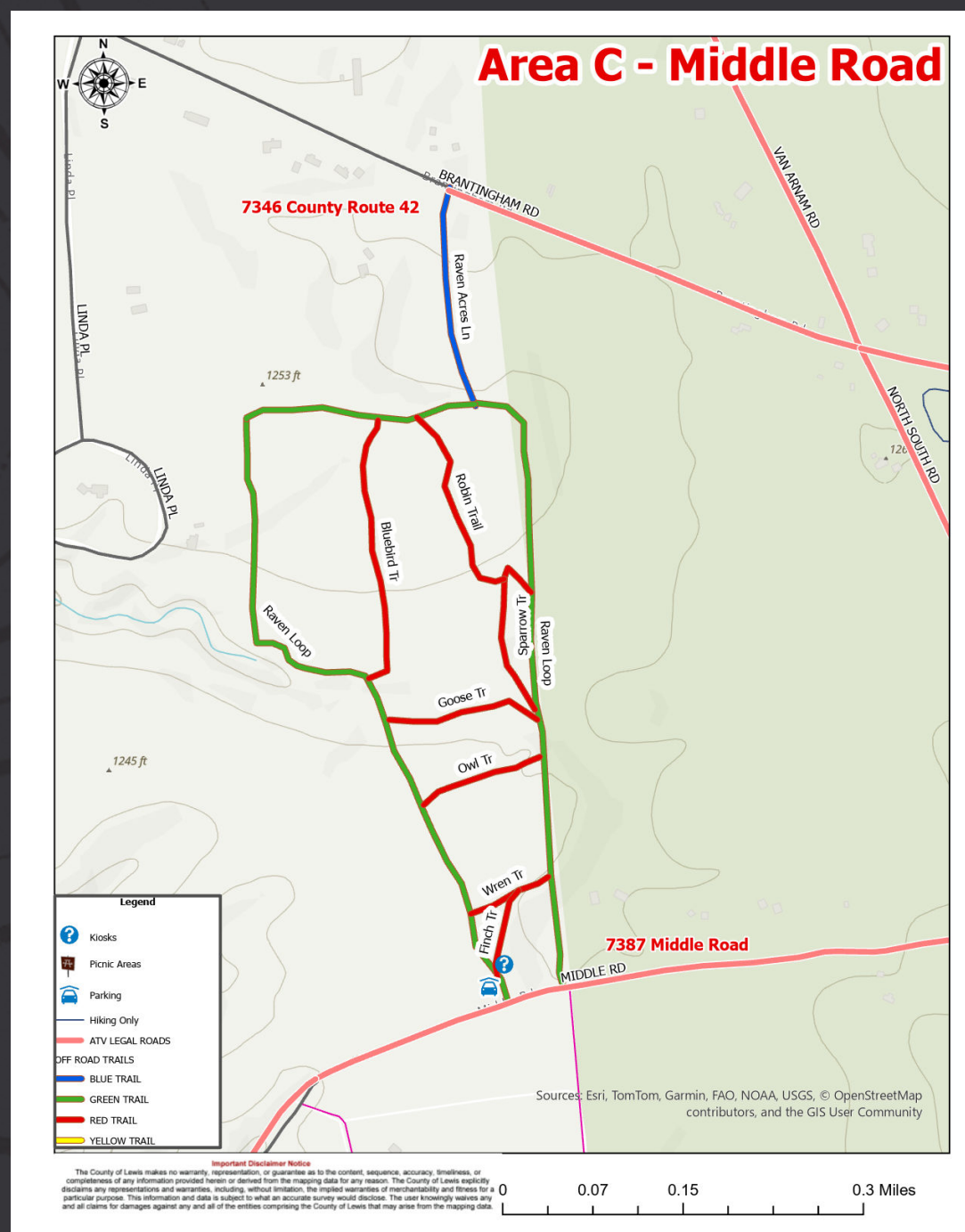
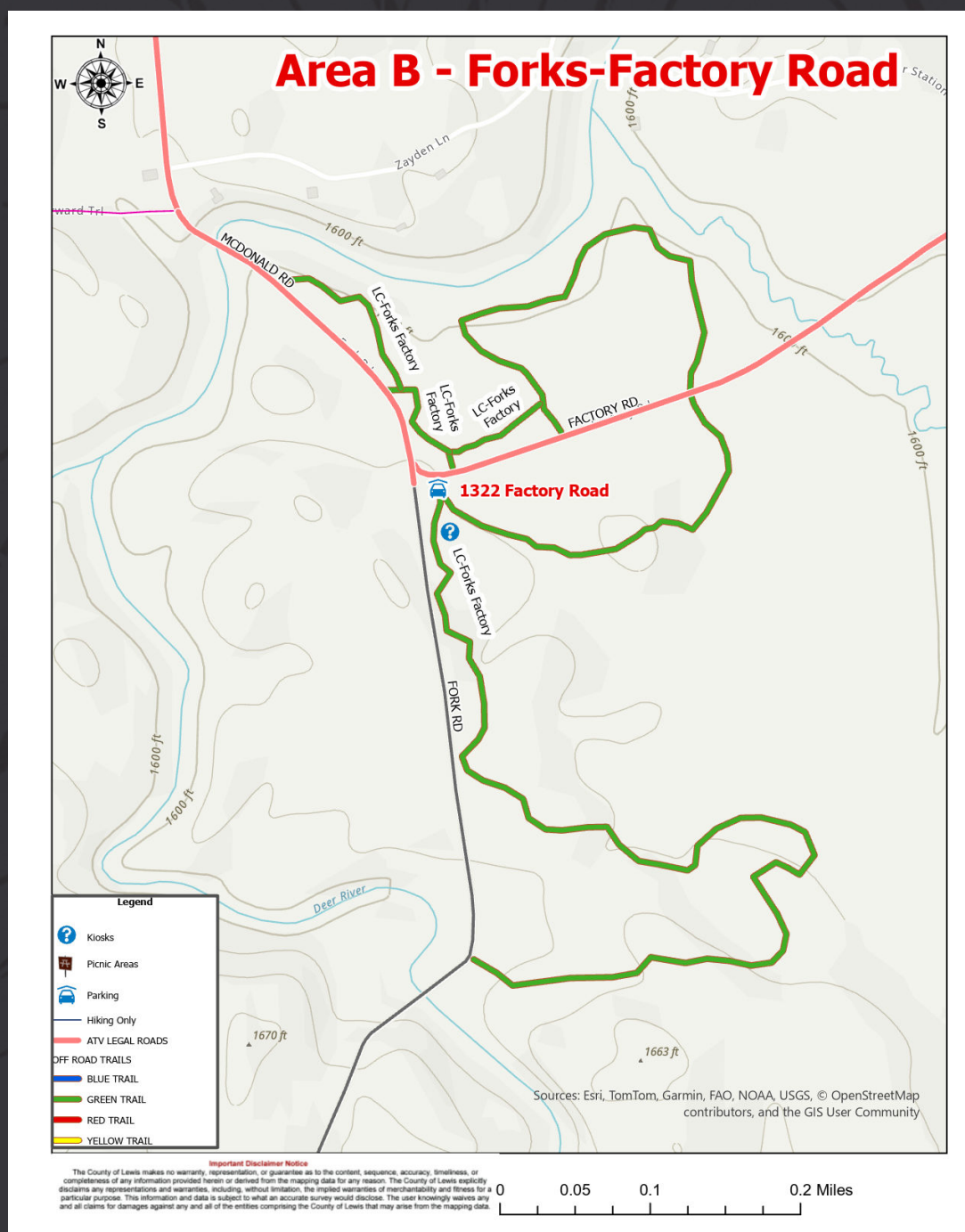
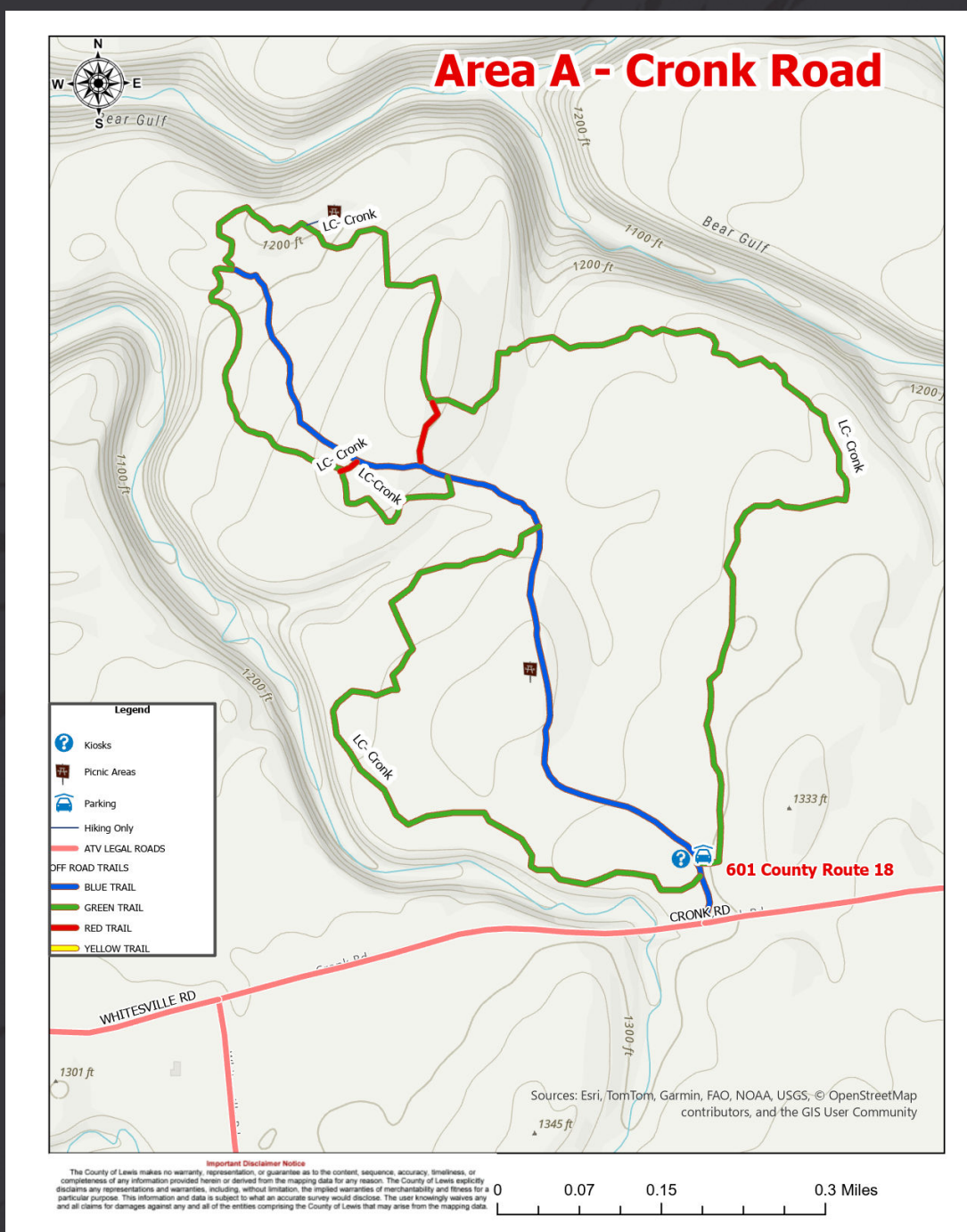
RESPECT THE TRAILS
GET INVOLVED. JOIN A CLUB.
BE AN AMBASSADOR
 Permit funds help us grow.

LEWIS COUNTY
 NEW YORK
 RECREATION FORESTRY PARKS

IN CASE OF AN EMERGENCY
DIAL 911



© 2026 LEWIS COUNTY
 OHV TRAIL MAP



LEWIS COUNTY
 NEW YORK

Find us on [Facebook](#) @RideATVNewYork for information on any changes to the map and new trails opened or closed during the season.

Discover TUG HILL
 Free weekend is August 1-3