

Comprehensive Plan Town of Martinsburg





Acknowledgements

4-Town Planning Committee

Town of Harrisburg

Norman Roof
Randy Nicol

Town of Martinsburg

Terry Thisse
Paul Kelly
Frank Kogut

Town of Montague

Jan Bagdanowicz
Wendy Perry
David Andolora

Town of Pinckney

Sherry Harmych
Dan Pearson, Jr.

TABLE OF CONTENTS

PART I – COMMUNITY PROFILE

DEMOGRAPHICS

- Population
- Regional Population Change
- Household and Family Size
- Housing
- Age
- Income
- Employment and Occupation
- Industry
- Educational Attainment
- Transportation to Work

FINANCE

- Revenues
- Expenditures
- Tax Rates

PART II – PLAN ELEMENTS AND STRATEGIES

NATURAL RESOURCES & ENVIRONMENT

AGRICULTURE

HISTORIC PRESERVATION

TRANSPORTATION

RECREATION & OPEN SPACE

ECONOMIC DEVELOPMENT & OTHER

PART III – PLAN ELEMENTS AND STRATEGIES

APPENDIX A – PLAN MAPS

- Map 1 – Topography
- Map 2 – Land Use
- Map 3 – Population Density
- Map 4 – Road Network
- Map 5 – Agricultural Districts
- Map 6 – Important Farmlands
- Map 7 – Watersheds
- Map 8 – Development Constraints (wetlands, steep slopes, streams, water bodies, public lands)
- Map 9 – Snowmobile & ATV Trails
- Map 10 – School Districts
- Map 11 – Special Districts
- Map 12 – Historic Resources

PART I - COMMUNITY PROFILE

DEMOGRAPHICS

All demographic figures are based upon data collected from both the 1990 and 2000 Census, as reported by the U.S. Census Bureau [www.census.gov]. Financial information is based upon the 2002 New York State Comptroller's report [osc.ny.gov].

Population

According to the 2000 Census, population in the Town of Martinsburg decreased by -8.0% between 1990 and 2000. The population of Lewis County grew by 0.6%, and the state as a whole experienced a 5.5% increase in population.

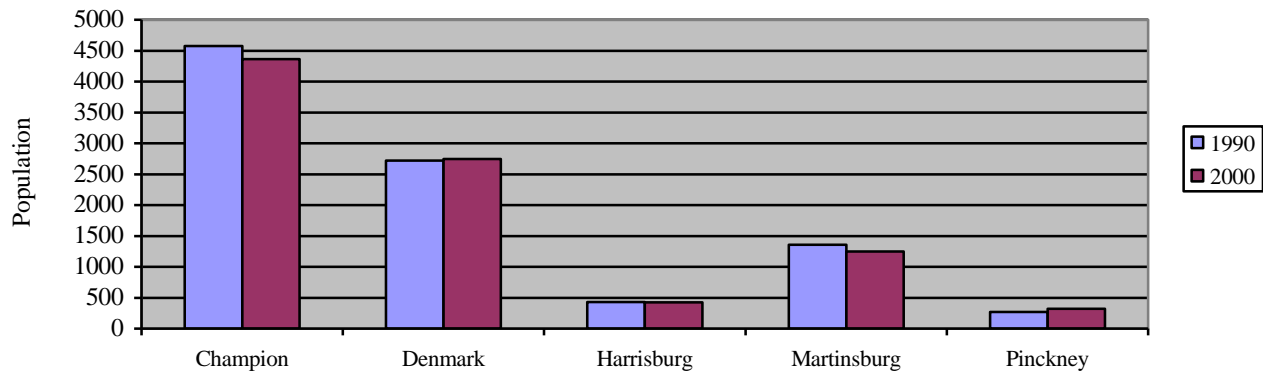
Table 1. Population Distribution

Population	1990	2000	% Change
Town of Martinsburg	1,358	1,249	-8.0%
Lewis County	26,796	26,944	+0.6
New York State	17,990,455	18,976,457	+5.5

Regional Population Changes

Nearby towns also experienced population loss during the 1990s; Champion and Harrisburg declined in size between 1990 and 2000, by -4.7% and -2.1% respectively. The towns of Denmark and Pinckney experienced slight growth, at +1.1% and +18.1%.

Figure 1. Population Changes in Nearby and Adjacent Towns



Household and Family Size

The Town of Martinsburg has an average household of 2.64 persons. The average household size in the CTHC region is 2.71 persons, which is slightly higher than the NY State average of 2.61. Average family size is also lower than the CTHC average in the Town of Martinsburg, at 3.11 persons. The CTHC average is 3.17, which is slightly lower than the state average of 3.22.

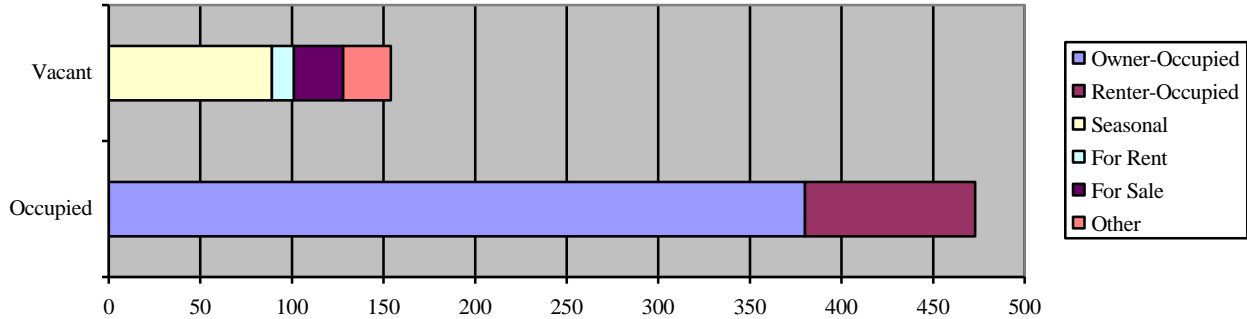
Table 2. Average Household and Family Size, 2000

	Town of Martinsburg	Lewis County	CTHC Region	New York State
Average Household Size (2000)	2.64	2.66	2.71	2.61
Average Family Size (2000)	3.11	3.12	3.17	3.22

Housing

According to the 2000 Census, 75.4% of all housing units are classified as occupied and 24.6% are vacant. Of occupied housing units, 80.3% are owner-occupied and 19.7% are renter-occupied. Seasonal units account for the majority of vacant units (57.8%) while homes for rent and sale are 7.8% and 17.5% respectively.

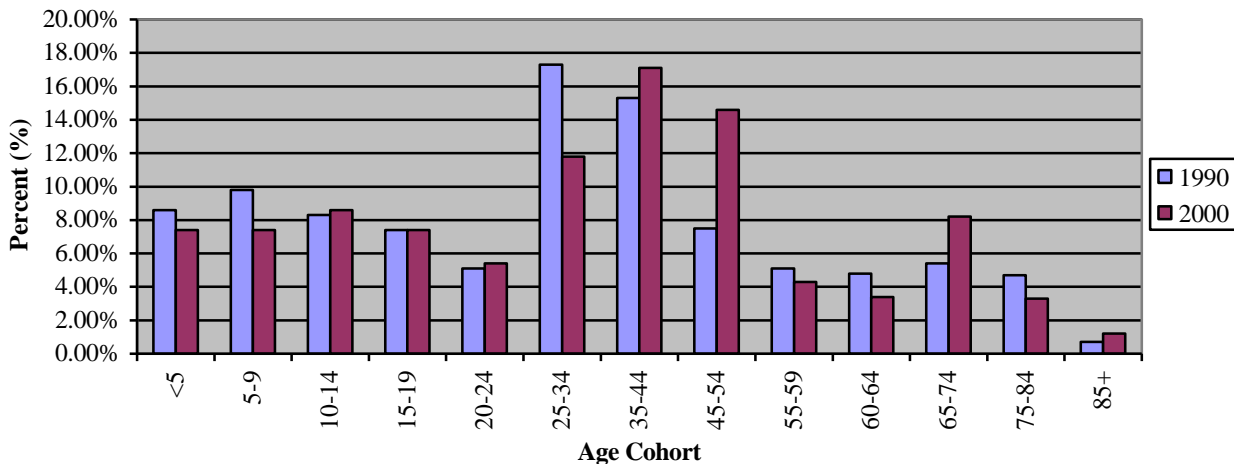
Figure 2. Housing Units, by Classification (2000)



Age

Most of the age cohorts did not change very dramatically between 1990 and 2000. As is true of the U.S. population as a whole, younger cohorts are declining slightly while older cohorts are growing. In Martinsburg, one noteworthy change was a decrease in the age 25-34 cohort – from 17.3% to 11.8% of the total population in 2000. Conversely, the age 45-54 cohort had the most significant positive change, from 7.5% of the total population in 1990 to 14.6% by 2000. Median age in the Town of Martinsburg was 36.4 years in 2000, which is comparable to the CTHC average of 36.8 years.

Figure 3. Age Cohorts by Percentage of Total Population, 1990 and 2000



The percentages (as represented in Figure 3) show each cohort's size relative to the total population. Figure 4 more accurately illustrates growth or decline within each age cohort, as the cohort size itself is compared from 1990 and 2000. In terms of percent change for each age cohort (between 1990 and 2000), only four cohorts experienced positive change. The most significant increase was in the age 45-54 cohort, which grew by 78.4%. Growth was also relatively significant (66.7%) in the age 85+ cohort. The largest decline was – 37.0%, which was the age 25-34 cohort. Over the decade, age distribution within the total population remained relatively constant (Figure 3).

Figure 4. Percent Change by Age Cohort, 1990 to 2000



Table 3. Percent Change by Age Cohort, 1990 to 2000

Age Cohort	1990	2000	% Change
<5 years	117	92	-21.4%
5-9	133	93	-30.1%
10-14	113	107	-5.3%
15-19	100	92	-8.0%
20-24	69	67	-2.9%
25-34	235	148	-37.0%
35-44	208	213	+2.4%
45-54	102	182	+78.4%
55-59	69	54	-21.7%
60-64	65	43	-33.8%
65-74	74	102	+37.8%
75-84	64	41	-35.9%
85+	9	15	+66.7%
TOTAL	1,358	1,249	-8.0%

Income

In the CTHC region, the average household income is \$34,507, while the average family income is slightly higher, \$38,406. Median annual income in the Town of Martinsburg was \$31,902 for households and \$35,978 for families. Both figures are slightly lower than the average for all CTHC towns.

Table 4. Median Income, 2000

LOCATION	Town of Martinsburg	CTHC Region	Lewis County
Median household income	\$31,902	\$34,507	\$34,361
Median family income	\$35,978	\$38,406	\$39,287

Employment and Occupation

Slightly less than 70% of the population (age 16+) is in the labor force. The vast majority of these persons are employed (63.1%), though 4.9% are classified as unemployed. The Town of Martinsburg is one of eight CTHC towns in which the largest percentage of the employed population works in management, professional and related occupations (30.7%). Sales and office occupations are the second most common (20.1%), followed by production, transportation, and material moving occupations (15.7%). Refer to Table 5 for employment figures and Table 6 for occupation information.

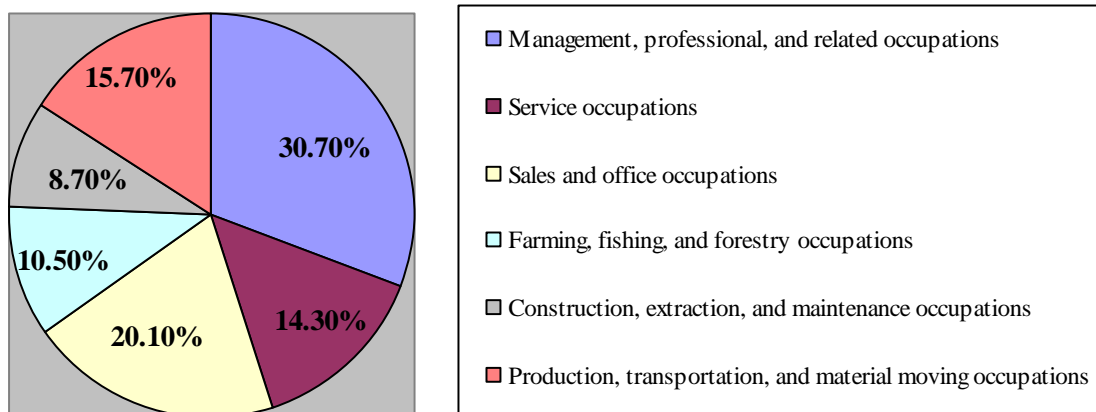
Table 5. Employment Status, 2000

Population age 16 years and over...	
In labor force	68.4%
Civilian	68.1%
Employed	63.1%
Unemployed	4.9%
Armed Forces	0.3%
Not in labor force	31.6%

Table 6. Percentage of Employed Population by Occupation, 2000

Occupation	
Management, professional, and related occupations	30.7%
Service occupations	14.3%
Sales and office occupations	20.1%
Farming, fishing, and forestry occupations	10.5%
Construction, extraction, and maintenance occupations	8.7%
Production, transportation, and material moving occupations	15.7%

Figure 5. Percentage of Employed Population by Occupation, 2000



Industry

The largest industry employing persons from the Town of Martinsburg is educational, health and social services (21.2%). Agriculture, forestry, fishing and hunting, and mining (21.0%) and manufacturing (12.5%) are the second and third largest sectors.

Table 7. Percentage of Employed Persons by Industry, 2000

Industry	
Agriculture, forestry, fishing, hunting and mining	21.0%
Construction	7.0%
Manufacturing	12.5%
Wholesale trade	2.3%
Retail trade	11.8%
Transportation and warehousing, and utilities	4.1%
Information	1.2%
Finance, insurance, real estate, and rental and leasing	0.5%
Professional, scientific, management, administrative, and waste management services	4.3%
Educational, health, and social services	21.2%
Arts, entertainment, recreation, accommodation and food services	4.5%
Other services (except public administration)	3.9%
Public administration	5.7%

Educational Attainment

In 2000, 86.0% of the population over age 25 had at least completed high school. Only 10.8% have bachelor's degrees or higher, but 11.6% have taken some college courses and another 6.0% have completed an associate's degree.

Table 8. Educational Attainment, 2000

Percent of the population age 25+ with...	
Less than 9 th grade	3.8%
9 th to 12 th grade, no diploma	10.1%
High school graduate (includes equivalency)	57.6%
Some college, no degree	11.6%
Associate degree	6.0%
Bachelor's degree	6.8%
Graduate or professional degree	4.0%
Percent high school graduate or higher	86.0%
Percent bachelor's degree or higher	10.8%

Transportation to Work

The vast majority of workers from the Town of Martinsburg drive alone to work (74.8%); however, a sizeable group of persons (8.3%) carpool to work. Another 8.8% of workers walk to work. Seven percent work from home. On average, the time spent traveling to work is 16.8 minutes.

Table 9. Means of Transportation, Employed Population Age 16+ (2000)

Means of transportation	
Car, truck, or van – drove alone	74.8%
Car, truck or van – carpooled	8.3%
Public transportation (including taxicab)	0%
Walked	8.8%
Other means	1.1%
Worked at home	7.0%
Mean travel time to work	16.8 minutes

FINANCE

Revenues

Total revenues for the Town of Martinsburg were \$789,600 in 2002. The majority of funds were raised from real property taxes (48%), followed by 26% from other sources.

Figure 6. Source of Revenues, 2002

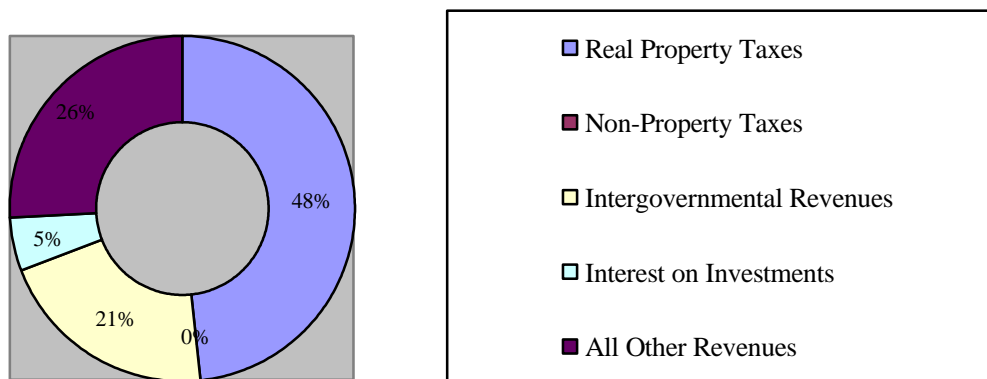


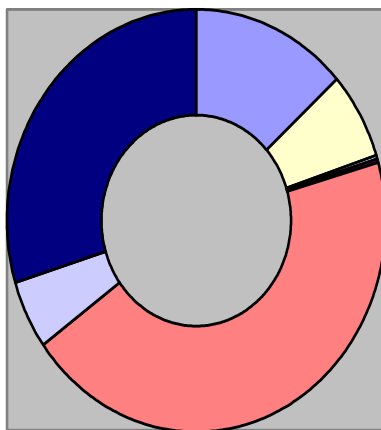
Table 10. Amount of Revenues Generated, by Source (2002)

SOURCE	Amount (\$000)	Percentage of Total Revenues
Real property taxes	382.3	48%
Non-property taxes	0	0%
Intergovernmental revenues	164.7	21%
Interest on investments	37.7	5%
All other revenues	204.9	26%

Expenditures

Transportation (44.3%) was the largest expense for the Town of Martinsburg. Home and community services accounted for nearly 30% of total expenditures, followed by 13.3% for general government expenses.

Figure 7. Expenditures by Function, 2002



- General Government
- Police
- Fire
- Other Public Safety
- Health
- Transportation
- Economic Assistance
- Culture-Recreation

Table 11. Expenditures

General Government	\$110,100	13.3%
Police	\$0	0%
Fire	\$55,700	6.7%
Other Public Safety	\$1,600	0.2%
Health	\$3,400	0.4%
Transportation	\$366,600	44.3%
Economic Assistance	\$700	0.1%
Culture-Recreation	\$42,900	5.2%
Home & Community Svcs.	\$246,600	29.8%
TOTAL	\$827,600.00	100%

Tax Rates

The NYS Comptroller reports the following property tax rates for 2003. Full taxable value is reported for 2002.

TOWN	COUNTY	FULL TAXABLE VALUE (tax base)	County Tax (per \$1000)	Town Tax (per \$1000)	School Tax (per \$1000)
Martinsburg	Lewis	\$40,743,000	7.70	7.54	12.44-14.18

PART II – PLAN ELEMENTS AND STRATEGIES

NATURAL RESOURCES & ENVIRONMENT

AGRICULTURE

HISTORIC PRESERVATION

TRANSPORTATION

RECREATION & OPEN SPACE

ECONOMIC DEVELOPMENT & OTHER

APPENDIX A – PLAN MAPS

Map 1 – Topography

Map 2 – Land Use

Map 3 – Population Density

Map 4 – Road Network

Map 5 – Agricultural Districts

Map 6 – Important Farmlands

Map 7 – Watersheds

Map 8 – Development Constraints (wetlands, steep slopes, streams, water bodies, public lands)

Map 9 – Snowmobile & ATV Trails

Map 10 – School Districts

Map 11 – Special Districts








Map 12 – Historic Resources

Town of Martinsburg - Community Vision for the Future

The purpose of comprehensive planning is to identify a clear and compelling vision for the future and to develop strategies to reach that vision. The Town of Martinsburg Comp Plan identifies this vision along with a set of goals that will help lead the town towards a bright future. The plan sets the path for helping the town to continue to be a beautiful, comfortable, peaceful, and desirable place to live.

20-Year Vision for 4-Towns

Working together as a community, we envision the Town of Martinsburg area twenty years from now as a place where:

-  Environmentally sensitive land and “special areas” in the town are protected for future generations. The need to protect important natural areas and resources continues to be a high priority for town residents. With careful planning, they preserve the town’s rural character, unique natural areas, and high quality of water, air and land.
-  Farming continues to be a viable way of life. Some family farms have developed specialty items and others have found unique niches. The preservation of the best farmland has attracted a stable farming community, encouraged by the dependable sources of water and good soil within the towns. Preservation of quality woodland has contributed to sustainable and responsible forestry practices within the towns as well.
-  Historically aware and informed citizens take pride in passing along important historic resources to future generations. By careful planning, they preserve and promote the towns’ historical heritage, historic sites and structures, and cemeteries.
-  Residents enjoy a well-planned and maintained highway system with town, county and state highways functioning properly.
-  Outdoor recreational activities of all kinds are enjoyed by town residents as well as recreation enthusiasts from around the northeast.
-  Open space is plentiful, enabling sustainable agriculture and forest production, providing outdoor recreational opportunities, and preserving important natural resources from development.
-  The local economy flourishes with locally-owned small businesses. Scattered throughout the four towns, businesses complement the peaceful rural nature of the towns.

Town of Martinsburg, Lewis County, NY

Community Goals and Objectives

Through community wide surveys, meetings of the planning committee, and from various county and regional plans and studies, the following community goals have been raised as being of importance to the future of the town of Martinsburg's community process:



Natural Resources and Environment

GOAL 1 - To protect access to important sensitive and special natural resources in the town such as gulfs, important habitat areas, large contiguous forest areas, core forest, major river and stream corridors, important headwater wetland areas, and watersheds which are an essential part of the rural character and quality of life.

Objective A: Complete an inventory and mapping of special areas using the Special Area Guidelines Workbook and designate special areas consistent with other Cooperative Tug Hill Council towns. Adopt appropriate land use regulations to protect and preserve these special areas.

Objective B: Reduce the impact of development on natural resources by use of cluster development as the preferred pattern for major subdivisions, adopt conservation subdivision practices and create a system of incentives to achieve desired land use patterns.

Objective C: Maintain the rural character of the landscape by preserving significant large parcels of undeveloped land and agricultural land.



Agriculture

GOAL 2 - To encourage the growth and economic viability of traditional and new forms of agriculture as both a source of economic activity and as a means of preserving the important components of the town's rural character.

Objective A: Support the vision statement, goals, and recommendations for viable agricultural activities as outlined in the Lewis County Agricultural Enhancement Plan adopted in May 2006.

Objective B: Ensure that development is compatible with the rural environment, active agriculture and productive forest activities.

Objective C: Promote sound forestry practices for all commercial harvesting through the establishment of minimum forest management standards.

Objective D: Encourage development and marketing of specialty products such as organic agriculture and niche markets.



Historic Preservation

GOAL 3 – To promote the cultural and historic character of the town.

Objective A: Protect and foster the town heritage through the identification and preservation of historic areas, structures and landmarks.

Objective B: Establish local incentives for historic preservation. Seek funding and volunteers to promote historic preservation.



Transportation

GOAL 4 – To control the cost to maintain the town highway system. At the same time, support the safety and functional well being of the town residents by developing, maintaining or improving the transportation system.

Objective A: Avoid new public roads into or across remote areas not now served by public roads, especially in the core forest of the town, in areas that would lead to the breakup of lands important to forest management, wildlife, farming, hunting, fishing and recreation.

Objective B: Identify on town-wide basis portions of roads that might be appropriate for some form of abandonment or seasonal use designation.

Objective C: Maintain low volume and minimum maintenance road system and work towards the adoption of an official map for the town.

Objective D: Support state legislation that would limit town responsibilities for maintenance on low volume and minimum maintenance roads.

Objective E: Limit development on low volume and minimum maintenance roads to seasonal uses and camps.

Objective F: Promote inter-municipal cooperation with adjacent towns as it relates to shared highway work and shared purchase, maintenance and operation of highway equipment.



Open Space

GOAL 5 - To preserve the natural open space resources, environmentally sensitive areas and unique plant and animal life in the town.

Objective A: Support private land trusts and similar organizations in their efforts to protect significant open space and environmental resources. This support must maintain the tax status of property and be non-restrictive to existing multiple recreational use on said property.

Objective B: Protect river and stream corridors, wetlands and groundwater from inappropriate levels and types of development.



Recreation

GOAL 6 - To encourage the safe enjoyment of recreational activities of all kind for the residents and property owners of the town as well as visitors and tourists from outside the region.

Objective A: Encourage the development of a legal, environmental friendly and safe Lewis County ATV and Snowmobile Recreational Trail Plan.

Objective B: Work with the Lewis County Trail Coordinator to identify all trail opportunities, such as nature trails, bike trails, horse trails and motorized recreational trails. In addition, existing motorized use should be maintained.

Objective C: Support private land trusts and similar organizations in their efforts to identify appropriate recreation uses on open space lands, which encourage hiking, cross-country skiing, snowshoeing, fishing and hunting.

Objective D: Identify and improve access points to the Black River for boating, kayaking and fishing.



Economic Development

GOAL 7 – To support and promote the town's current economic base to retain existing employment opportunities and increase availability of good quality employment opportunities by promoting Lewis County as a great place to live, work and visit.

Objective A: Support the vision statement, goals and objectives for economic development as outlined in the Lewis County Comprehensive Economic Development Strategy adopted by the county in 2006.

Objective B: Support economic development opportunities at Regional Solid Waste Management Facility located in Rodman based on development of alternative energy sources.

Objective C: Encourage development of high-speed internet service to all residents and seasonal residents of the town.

Objective D: Encourage satellite education opportunities for college level classes in the region in order to cut down on travel outside the region.

Objective E: Encourage the development of Renewable Energy Development and Natural Gas Exploration that will preserve the natural open space resources, environmentally sensitive areas and unique plant and animal life in the town.

Objective G: Encourage appropriate commercial development in established hamlet areas.

Objective F: Carefully plan for the proper maintenance and upkeep of existing water and sewer districts as well as for the proper extensions of these districts in order for proper development to take place.

Legend

Elevation

Value

High

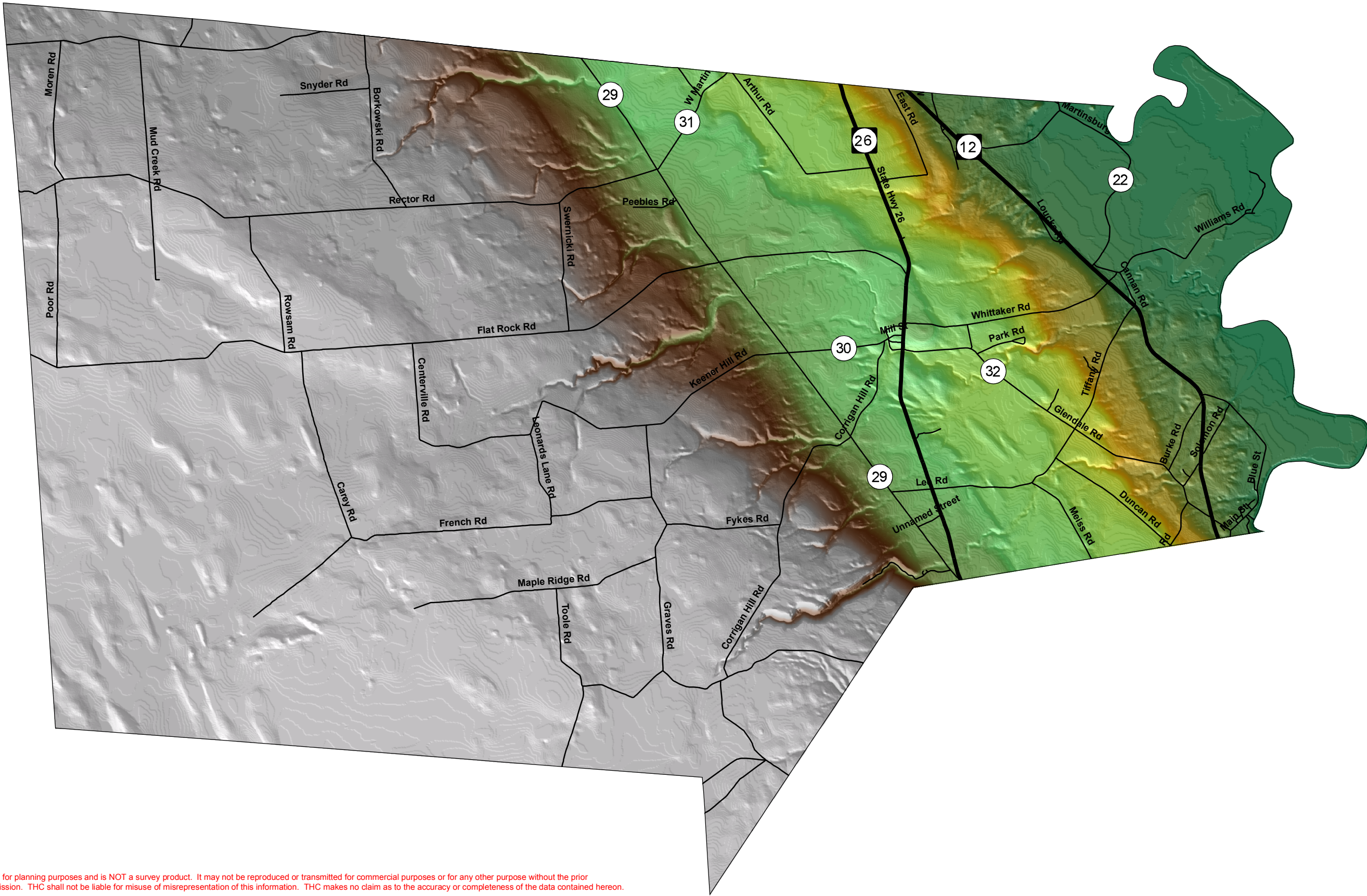
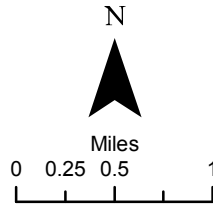
Low

Comprehensive Plan

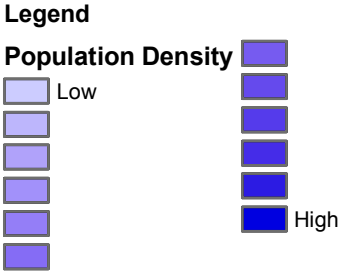
Topography

Town of Martinsburg, Lewis County

Created By: THC/MDD - 05/19/08



This information was compiled for planning purposes and is NOT a survey product. It may not be reproduced or transmitted for commercial purposes or for any other purpose without the prior authorization of the NYS Tug Hill Commission. THC shall not be liable for misuse or misrepresentation of this information. THC makes no claim as to the accuracy or completeness of the data contained hereon.

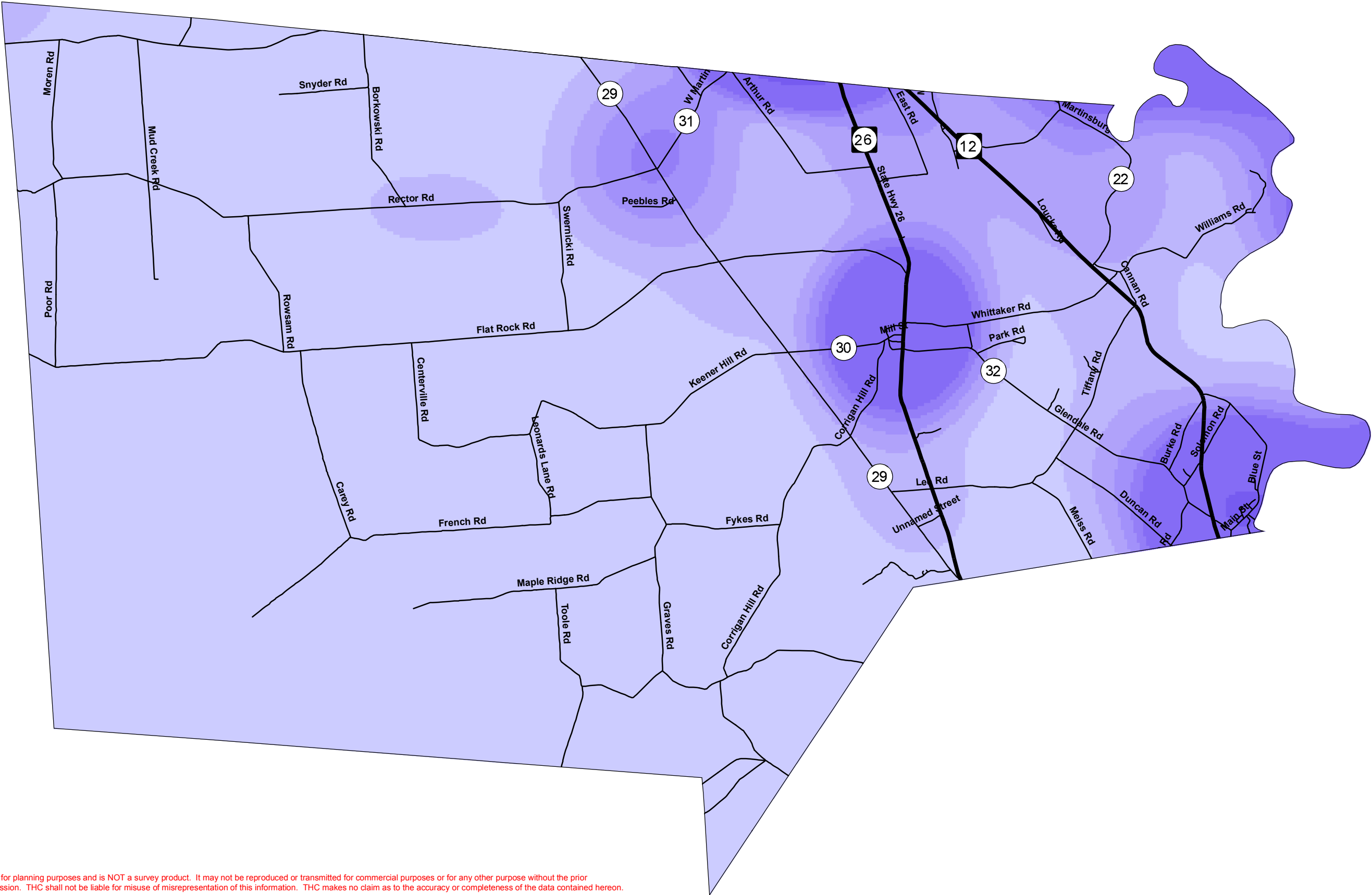
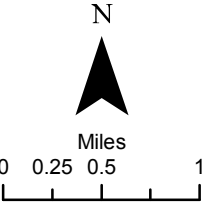


Comprehensive Plan

Population

Town of Martinsburg, Lewis County

Created By: THC/MDD - 05/19/08



This information was compiled for planning purposes and is NOT a survey product. It may not be reproduced or transmitted for commercial purposes or for any other purpose without the prior authorization of the NYS Tug Hill Commission. THC shall not be liable for misuse or misrepresentation of this information. THC makes no claim as to the accuracy or completeness of the data contained hereon.

Legend

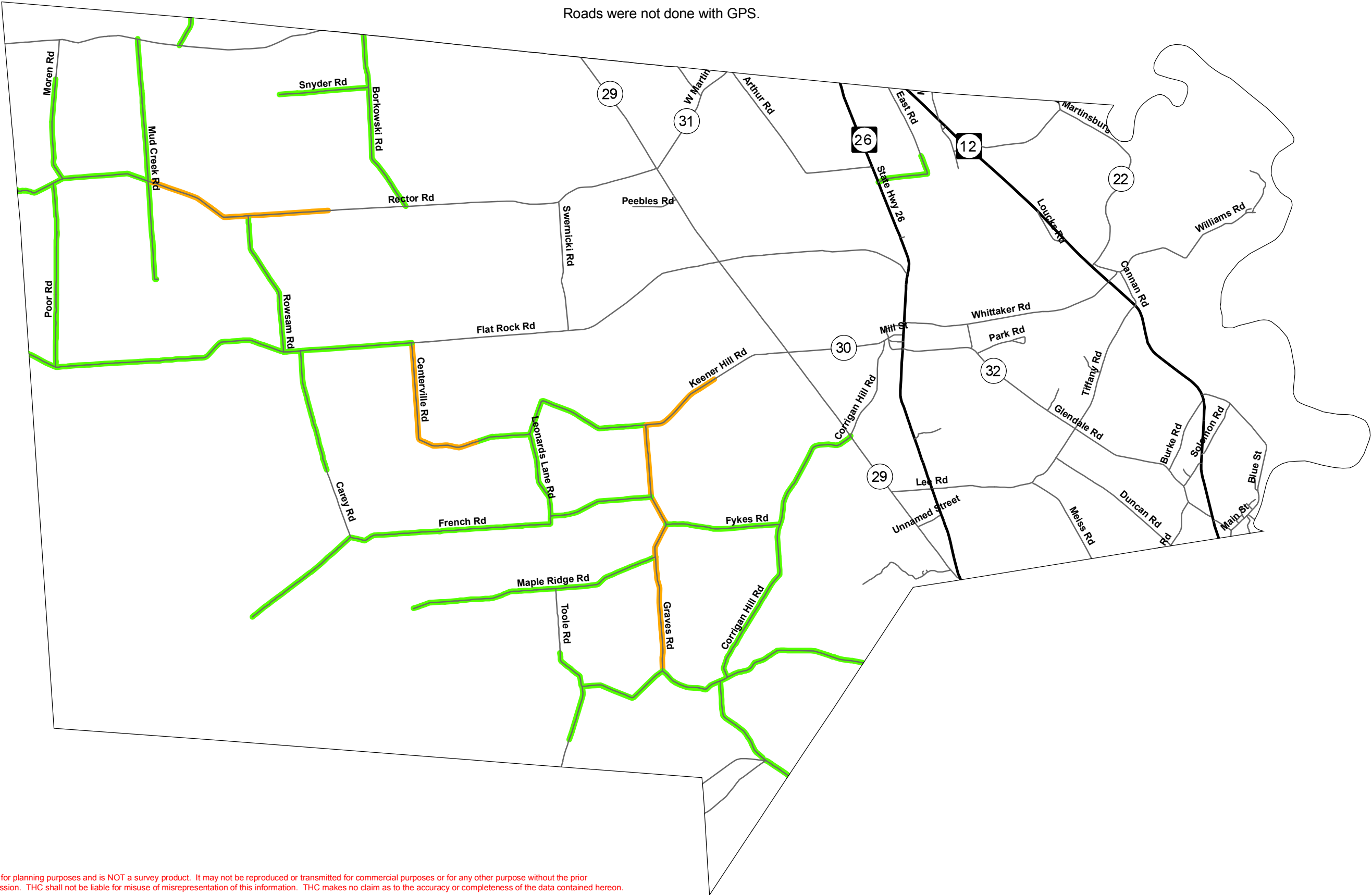
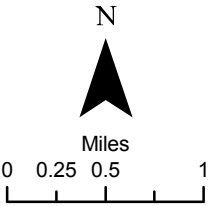
- Minimum Maintenance
- Seasonal

Comprehensive Plan

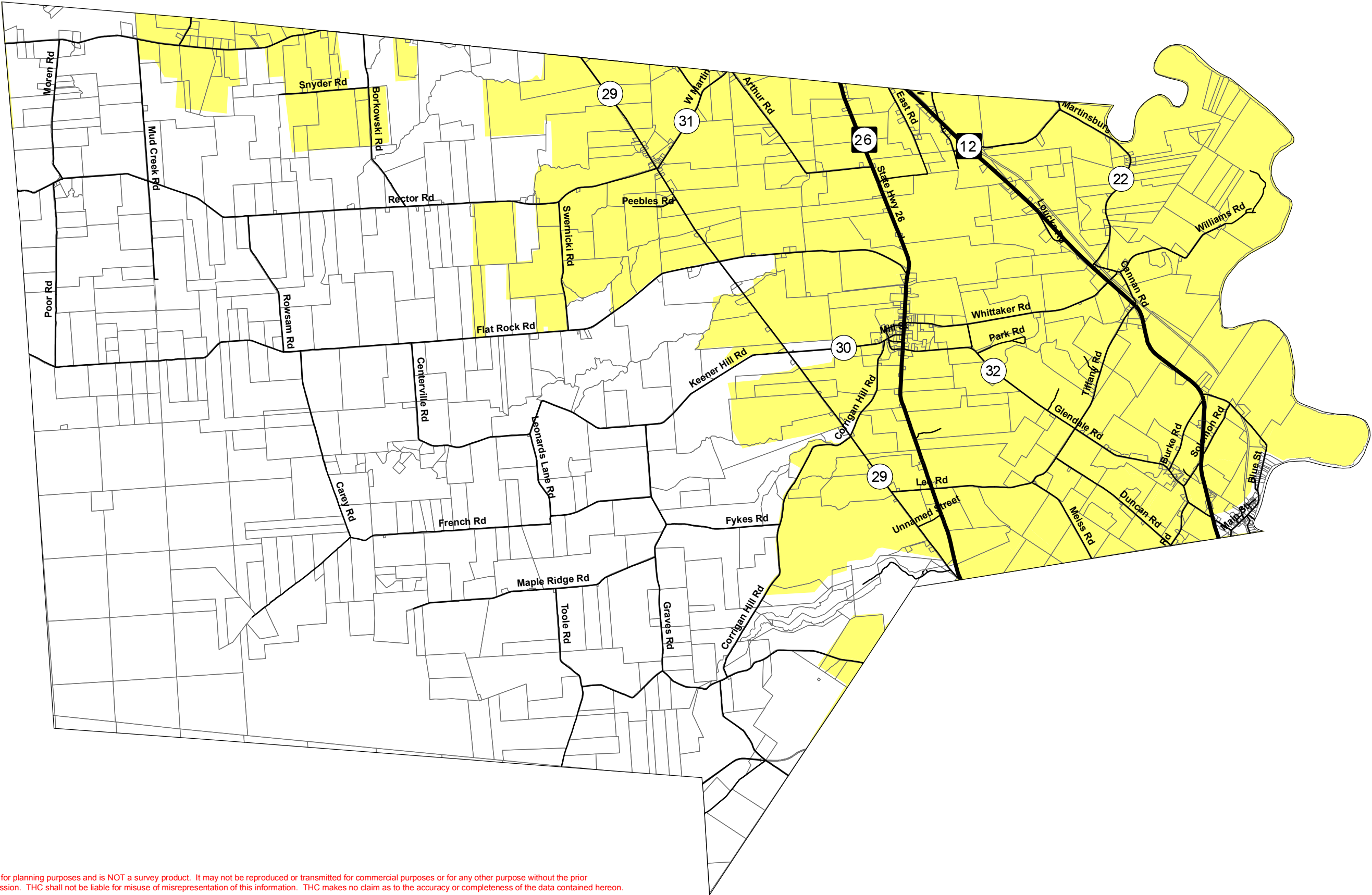
Minimum Maintenance Roads

Town of Martinsburg, Lewis County

Created By: THC/MDD - 05/19/08



This information was compiled for planning purposes and is NOT a survey product. It may not be reproduced or transmitted for commercial purposes or for any other purpose without the prior authorization of the NYS Tug Hill Commission. THC shall not be liable for misuse or misrepresentation of this information. THC makes no claim as to the accuracy or completeness of the data contained hereon.



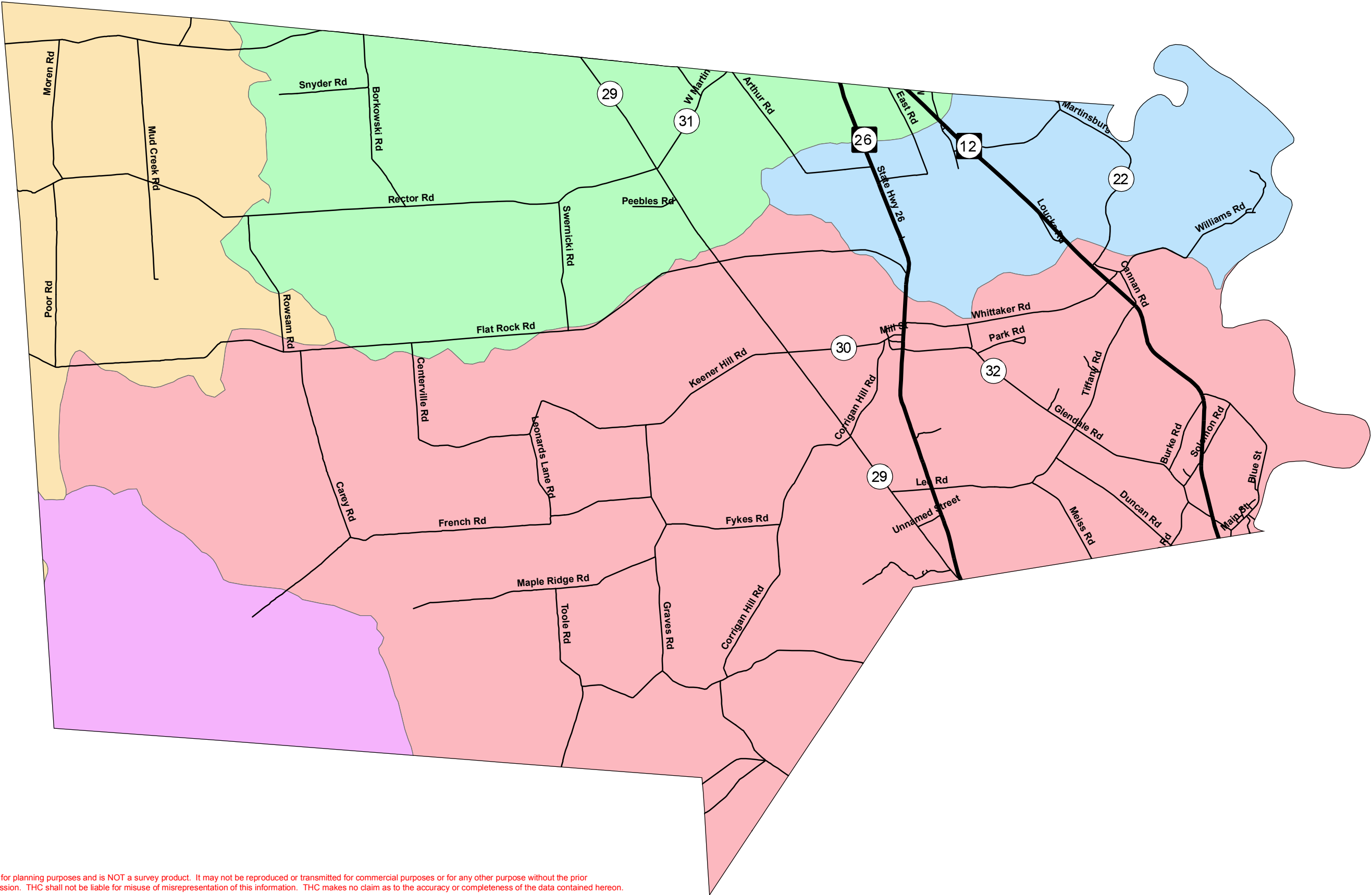
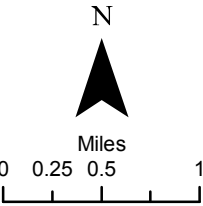
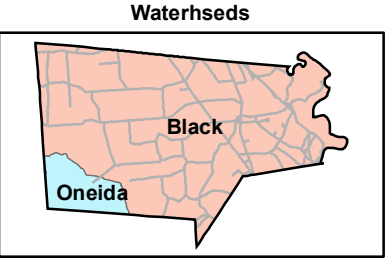
This information was compiled for planning purposes and is NOT a survey product. It may not be reproduced or transmitted for commercial purposes or for any other purpose without the prior authorization of the NYS Tug Hill Commission. THC shall not be liable for misuse or misrepresentation of this information. THC makes no claim as to the accuracy or completeness of the data contained hereon.

- Legend**
- Sub Watersheds**
- Deer River
 - East Branch Fish Creek
 - Middle Black River
 - Mill Creek
 - Upper Middle Black River

Comprehensive Plan Watersheds

Town of Martinsburg, Lewis County

Created By: THC/MDD - 05/19/08



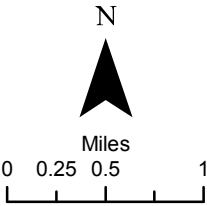
This information was compiled for planning purposes and is NOT a survey product. It may not be reproduced or transmitted for commercial purposes or for any other purpose without the prior authorization of the NYS Tug Hill Commission. THC shall not be liable for misuse of misrepresentation of this information. THC makes no claim as to the accuracy or completeness of the data contained hereon.

Legend

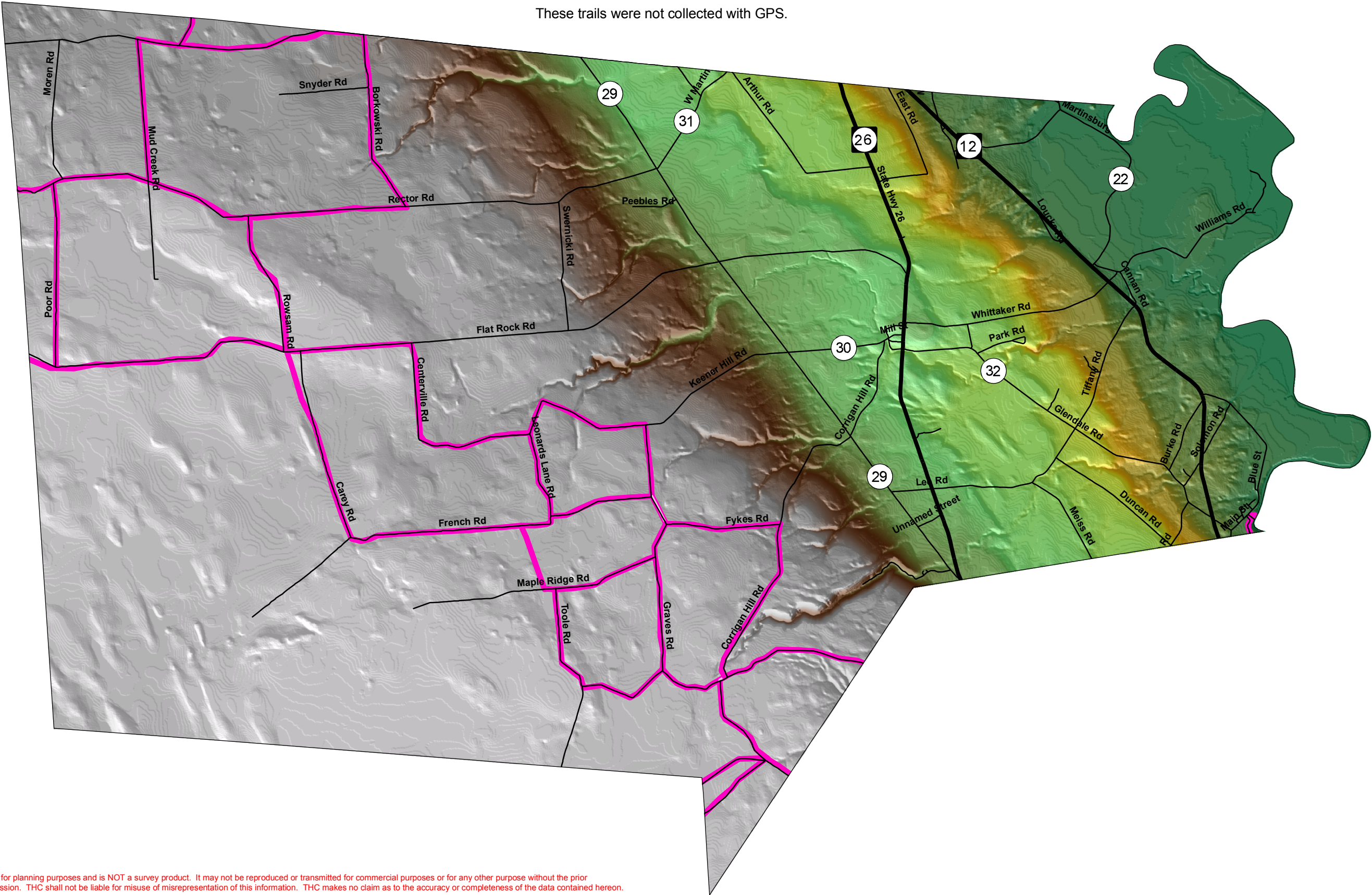
Snowmobile Trails 2007

- Corridor
- Corridor-Corridor
- Corridor-Secondary
- Secondary

Comprehensive Plan
State Funded Snowmobile Trails
Town of Martinsburg, Lewis County
Created By: THC/MDD - 05/19/08



These trails were not collected with GPS.



This information was compiled for planning purposes and is NOT a survey product. It may not be reproduced or transmitted for commercial purposes or for any other purpose without the prior authorization of the NYS Tug Hill Commission. THC shall not be liable for misuse or misrepresentation of this information. THC makes no claim as to the accuracy or completeness of the data contained hereon.

Legend

School District

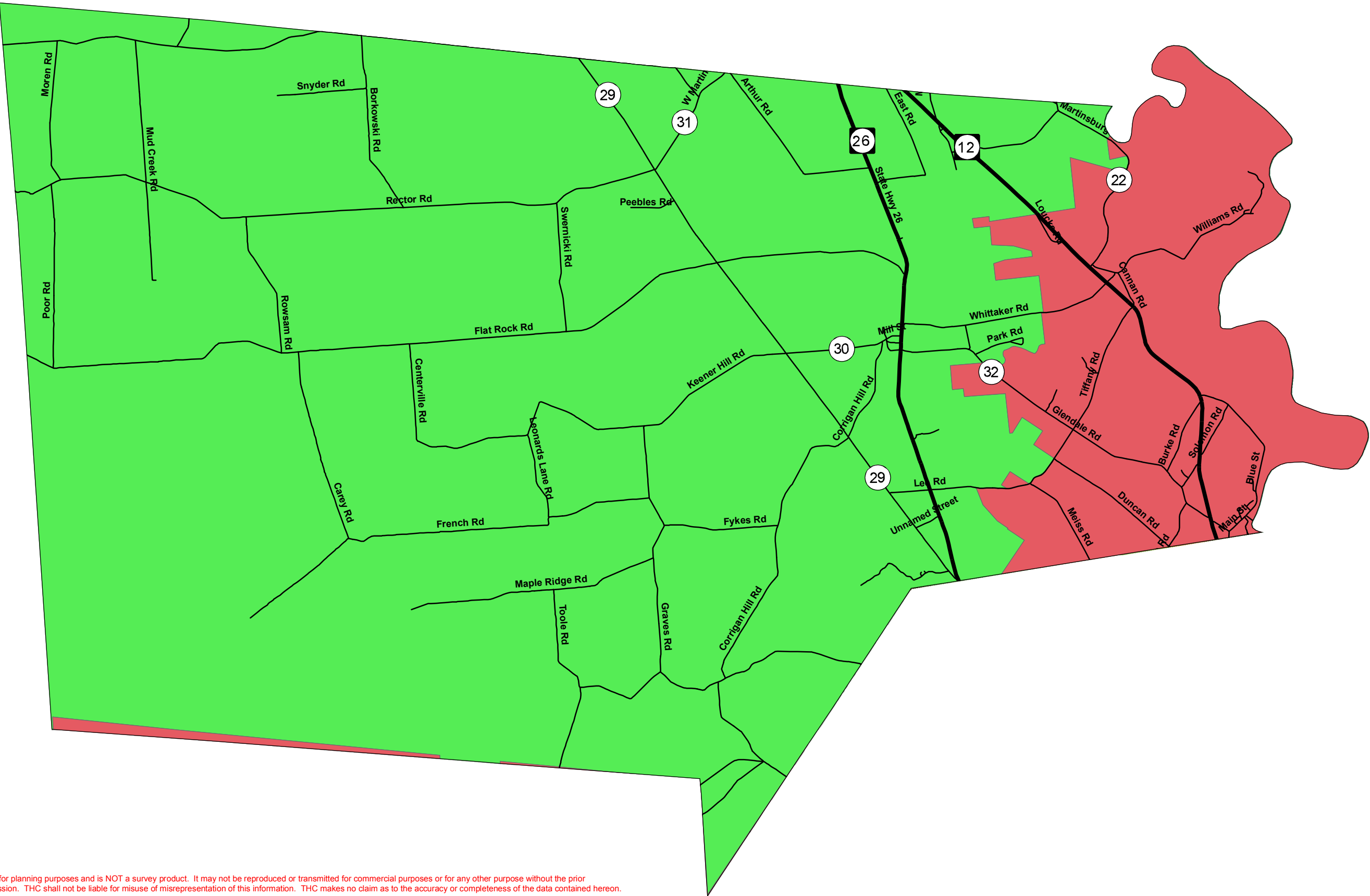
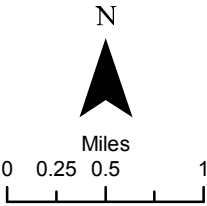
Lowville

South Lewis

Comprehensive Plan
School Districts

Town of Martinsburg, Lewis County

Created By: THC/MDD - 05/19/08



This information was compiled for planning purposes and is NOT a survey product. It may not be reproduced or transmitted for commercial purposes or for any other purpose without the prior authorization of the NYS Tug Hill Commission. THC shall not be liable for misuse or misrepresentation of this information. THC makes no claim as to the accuracy or completeness of the data contained hereon.

Legend

Landuse

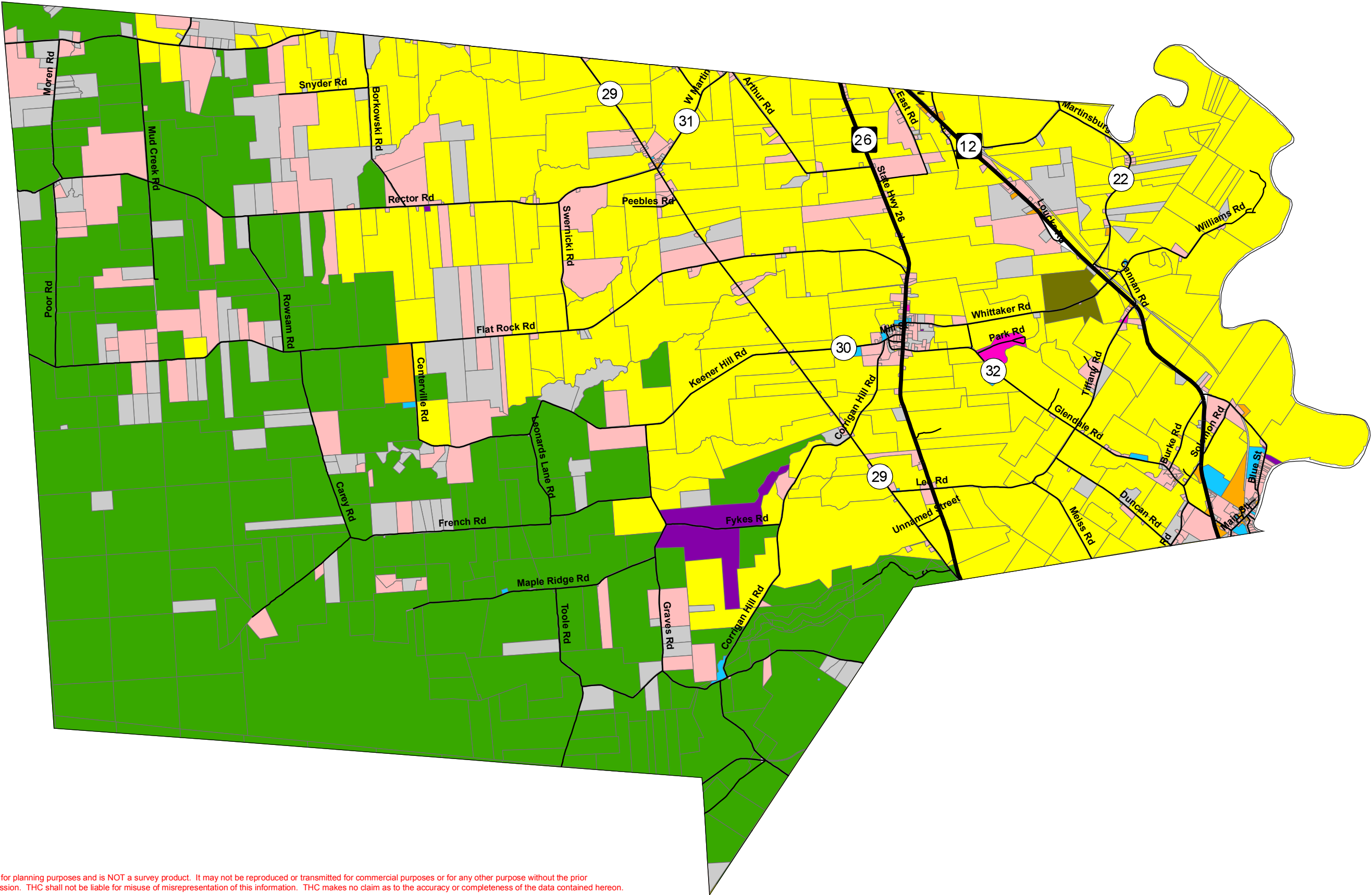
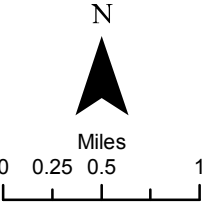
	Agricultural		Recreational
	Residential		Community Services
	Vacant		Industrial
	Commercial		Public Services
			Forest

Comprehensive Plan

Landuse

Town of Martinsburg, Lewis County

Created By: THC/MDD - 05/19/08



This information was compiled for planning purposes and is NOT a survey product. It may not be reproduced or transmitted for commercial purposes or for any other purpose without the prior authorization of the NYS Tug Hill Commission. THC shall not be liable for misuse or misrepresentation of this information. THC makes no claim as to the accuracy or completeness of the data contained hereon.

Legend

Streams

Waterbodies

Public Lands

Steep Slopes

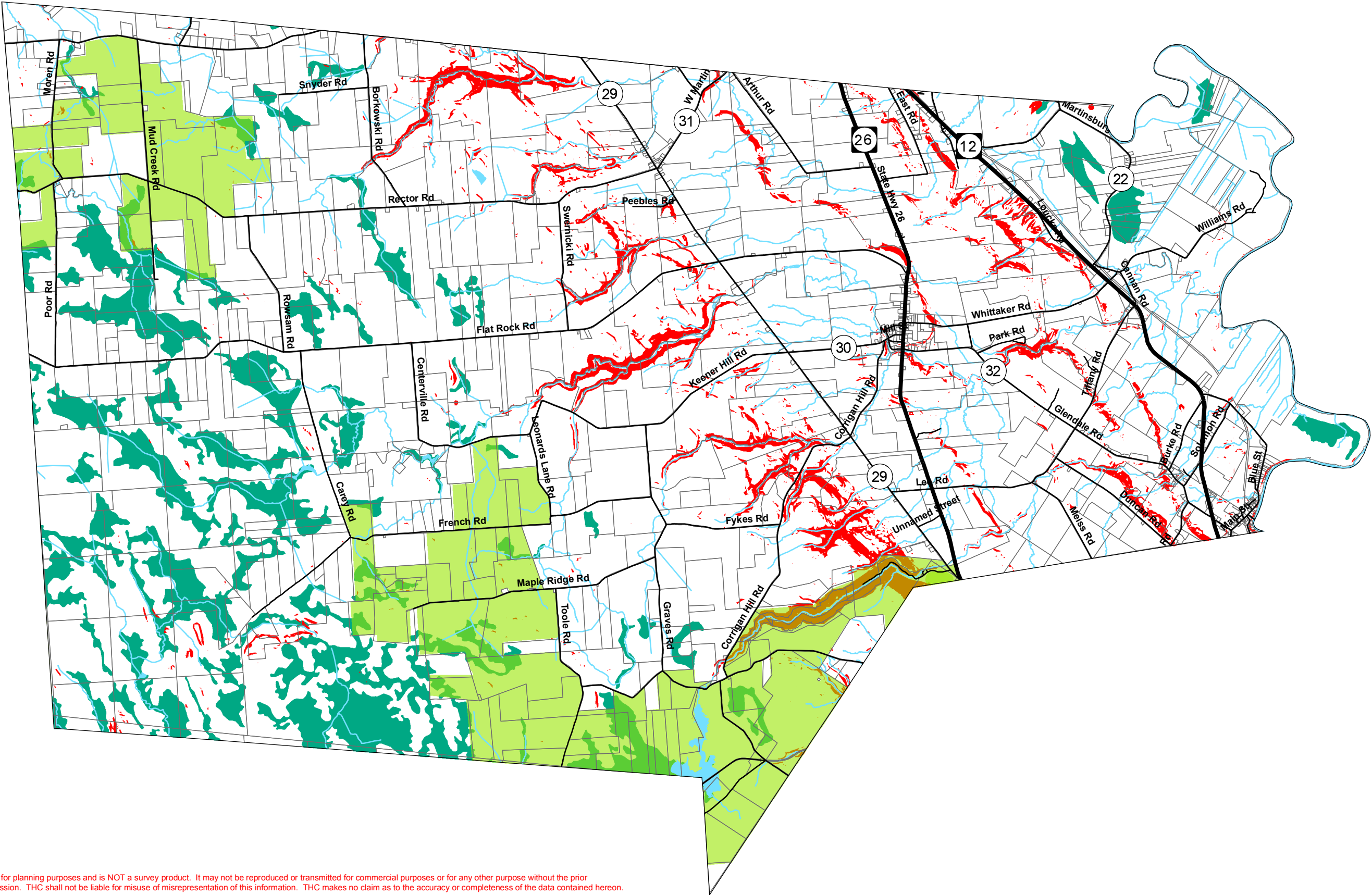
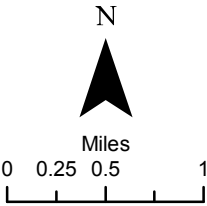
DEC Wetlands

Comprehensive Plan

Development Constraints

Town of Martinsburg, Lewis County

Created By: THC/MDD - 05/19/08



This information was compiled for planning purposes and is NOT a survey product. It may not be reproduced or transmitted for commercial purposes or for any other purpose without the prior authorization of the NYS Tug Hill Commission. THC shall not be liable for misuse of misrepresentation of this information. THC makes no claim as to the accuracy or completeness of the data contained hereon.